

## Product datasheet for **CS716739**

### Tissue FFPE Sections, Breast

#### Product data:

Product Type:	FFPE Sections
Disease State:	Other Disease
Diagnosis Category:	Hyperplasia
Tissue:	Breast
Frozen Sample ID:	PA0F33606F
Case ID:	CI7000000255
Tissue of Origin:	Breast
Site of Finding:	Breast
Appearance:	L
Sample Diagnosis (from Pathology Verification):	Ductal hyperplasia of breast, atypical
Normal:	90%
Lesional:	10%
Tumor:	0%
Tumor Hypo/Acellular Stroma:	0%
Tumor Hypercellular Stroma:	0%
Necrosis:	0%
Pathology Verification notes from H&E review:	Non Tumor Structures: 10% Glandular epithelium, 80% Stroma, 10% Adipose tissue
CASE Diagnosis (from medical center path report):	Ductal hyperplasia of breast, atypical
Age:	45
Gender:	Female
Race:	White or Caucasian

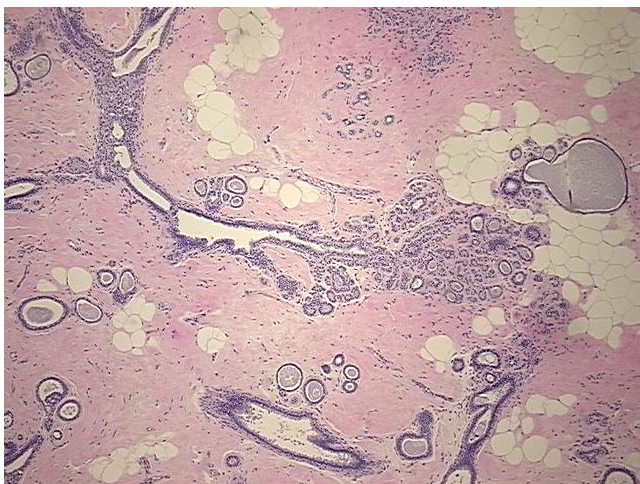


[View online »](#)

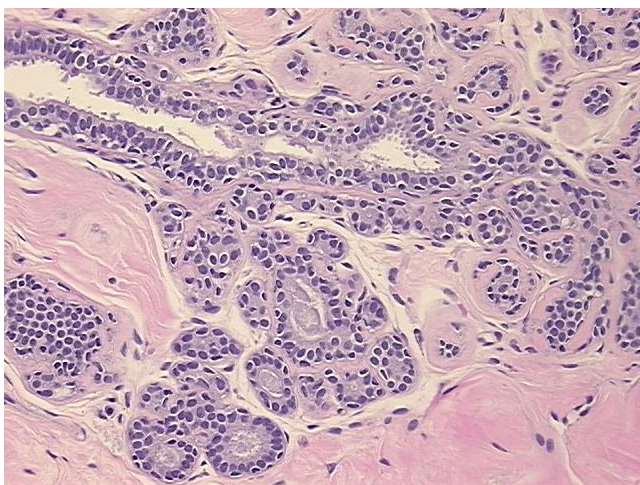
**Storage:** Store FFPE tissue sections at +4°C.

**Stability:** All FFPE tissue sections are stable for 1 year from date of purchase.

**Product images:**



4x Image



20x Image