

Product datasheet for **CS716358**

Tissue FFPE Sections, Lung: left upper lobe

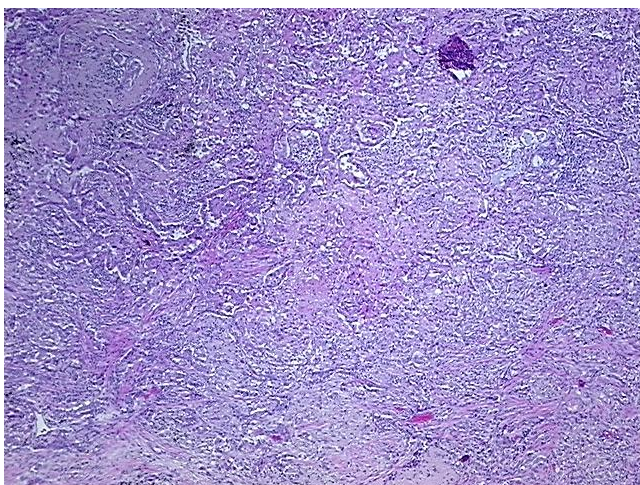
Product data:

Product Type:	FFPE Sections
Disease State:	Cancer
Diagnosis Category:	Lung Cancer
Tissue:	Lung
Frozen Sample ID:	PA0000C7BB
Case ID:	CI0000021955
Tissue of Origin:	Lung: left upper lobe
Site of Finding:	Lung
Appearance:	T
Sample Diagnosis (from Pathology Verification):	Adenocarcinoma of lung (EGFR+)
Normal:	0%
Lesional:	0%
Tumor:	40%
Tumor Hypo/Acellular Stroma:	60%
Tumor Hypercellular Stroma:	0%
Necrosis:	0%
Pathology Verification notes from H&E review:	Tumor Stroma (Hypo/Acellular): Desmoplastic reaction, Fibroelastosis; Inflammation: Moderate Lymphoplasmacytic infiltrate
CASE Diagnosis (from medical center path report):	Adenocarcinoma of lung
Age:	89
Gender:	Male
Race:	White or Caucasian

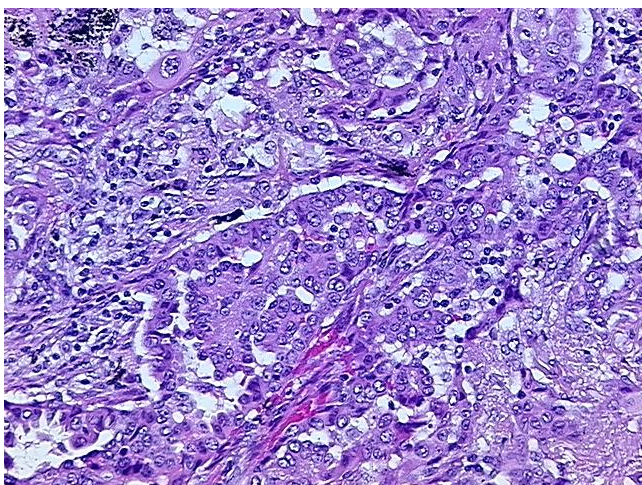


[View online »](#)

Tumor Grade:	AJCC G2: Moderately differentiated
Minimum Stage Grouping:	IIA
T (Extent of Primary Tumor):	T1
N (Lymph node metastasis):	N1
M (Distant metastasis):	MX
Diagnostic Test Results:	Verhoeff-Van Gieson ~ Elastin stain, Pleura not involved; ERBB1 ~ EGFR ~ Epidermal growth factor receptor ! by IHC, Positive, strong
Storage:	Store FFPE tissue sections at +4°C.
Stability:	All FFPE tissue sections are stable for 1 year from date of purchase.

Product images:

4x Image



20x Image