

Product datasheet for CS716268

Tissue FFPE Sections, Lung

Product data:

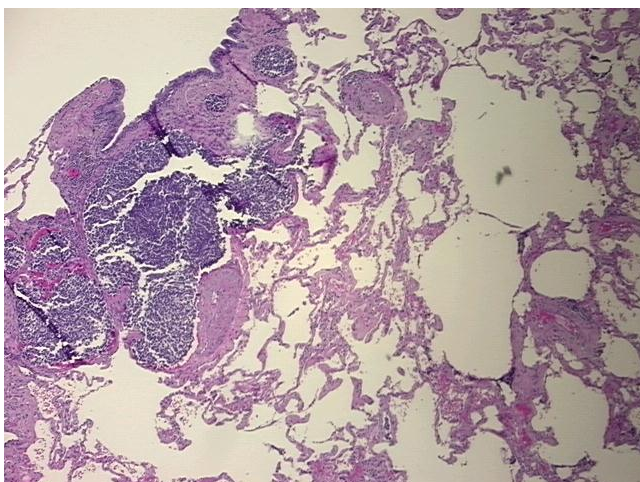
Product Type:	FFPE Sections
Disease State:	Cancer
Diagnosis Category:	Lung Cancer
Tissue:	Lung
Frozen Sample ID:	PA0000C74A
Case ID:	CI0000021816
Tissue of Origin:	Lung
Site of Finding:	Lung
Appearance:	T
Sample Diagnosis (from Pathology Verification):	Carcinoma of lung, small cell
Normal:	90%
Lesional:	0%
Tumor:	10%
Tumor Hypo/Acellular Stroma:	0%
Tumor Hypercellular Stroma:	0%
Necrosis:	0%
Pathology Verification notes from H&E review:	Non Tumor Structures: 85% Alveoli, 5% Bronchioles, 10% Fibrovascular septa; Other Features/Comments: Tumor in septal lymphatics
CASE Diagnosis (from medical center path report):	Carcinoma of lung, small cell
Age:	68
Gender:	Male
Race:	White or Caucasian



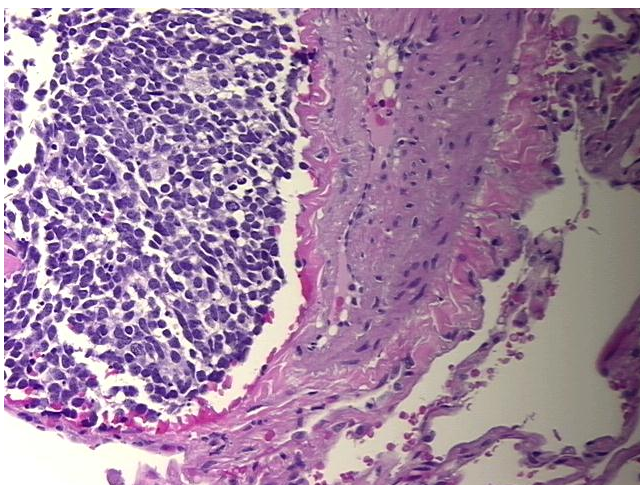
[View online »](#)

Tumor Grade:	Not Reported
Minimum Stage Grouping:	IIIA
T (Extent of Primary Tumor):	T1
N (Lymph node metastasis):	N2
M (Distant metastasis):	MX
Diagnostic Test Results:	Other immunohistochemistry, Positive; Synaptophysin ~ SYN ! by IHC, Positive, focal; Chromogranin A ~ Parathyroid secretory protein 1 ! by IHC, Positive, focal; Thyroid transcription factor 1 ~ TTF1 ! by IHC, Positive
Storage:	Store FFPE tissue sections at +4°C.
Stability:	All FFPE tissue sections are stable for 1 year from date of purchase.

Product images:



4x Image



20x Image