

Product datasheet for CS716264

Tissue FFPE Sections, Prostate

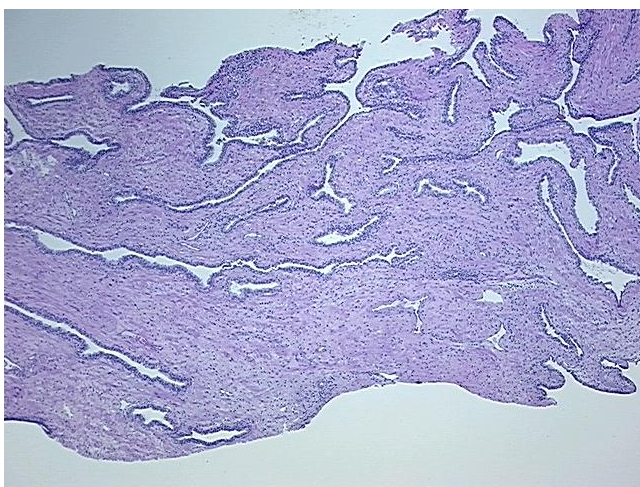
Product data:

| | |
|---------------------------------------------------|--------------------------------------------------------------------------------------------------------|
| Product Type: | FFPE Sections |
| Disease State: | Other Disease |
| Diagnosis Category: | Atrophy |
| Tissue: | Prostate |
| Frozen Sample ID: | PA0000C746 |
| Case ID: | CI0000021800 |
| Tissue of Origin: | Prostate |
| Site of Finding: | Prostate |
| Appearance: | L |
| Sample Diagnosis (from Pathology Verification): | Atrophy of tissue |
| Normal: | 0% |
| Lesional: | 100% |
| Tumor: | 0% |
| Tumor Hypo/Acellular Stroma: | 0% |
| Tumor Hypercellular Stroma: | 0% |
| Necrosis: | 0% |
| Pathology Verification notes from H&E review: | Inflammation: Mild Lymphoid infiltrate; Non Tumor Structures: 30% Epithelium, 70% Fibromuscular stroma |
| CASE Diagnosis (from medical center path report): | Adenocarcinoma of prostate |
| Age: | 64 |
| Gender: | Male |
| Race: | White or Caucasian |

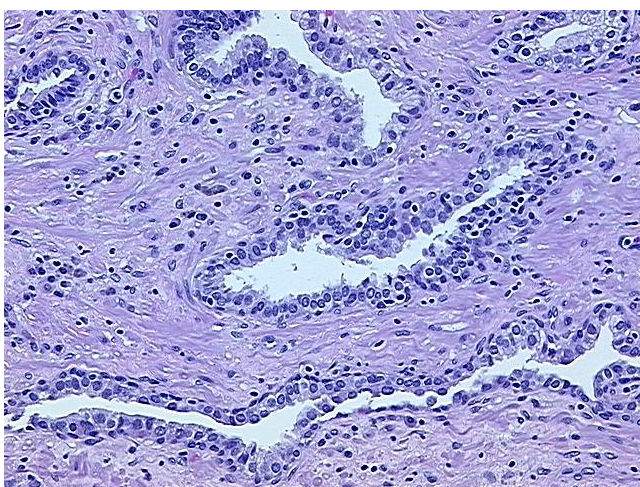


[View online »](#)

| | |
|------------------------------|-----------------------------------------------------------------------|
| Tumor Grade: | Gleason Score: 3+3=6/10 |
| Minimum Stage Grouping: | II |
| T (Extent of Primary Tumor): | T2a |
| N (Lymph node metastasis): | N0 |
| M (Distant metastasis): | MX |
| Storage: | Store FFPE tissue sections at +4°C. |
| Stability: | All FFPE tissue sections are stable for 1 year from date of purchase. |

Product images:

4x Image



20x Image