

Product datasheet for **CS716189**

Tissue FFPE Sections, Gastroesophageal junction

Product data:

| | |
|---|---|
| Product Type: | FFPE Sections |
| Disease State: | Cancer |
| Diagnosis Category: | Esophageal/Gastroesophageal Cancer |
| Tissue: | Gastroesophageal junction |
| Frozen Sample ID: | PA0000BDDF |
| Case ID: | CI0000021566 |
| Tissue of Origin: | Gastroesophageal junction |
| Site of Finding: | Stomach |
| Appearance: | T |
| Sample Diagnosis (from Pathology Verification): | Adenocarcinoma of stomach |
| Normal: | 0% |
| Lesional: | 0% |
| Tumor: | 90% |
| Tumor Hypo/Acellular Stroma: | 0% |
| Tumor Hypercellular Stroma: | 10% |
| Necrosis: | 0% |
| Pathology Verification notes from H&E review: | Tumor Stroma (Cellular): Desmoplastic reaction; Other Features/Comments: Tumor area: 14 mm x 5 mm |
| CASE Diagnosis (from medical center path report): | Adenocarcinoma of gastroesophageal junction |
| Age: | 78 |
| Gender: | Female |
| Race: | White or Caucasian |

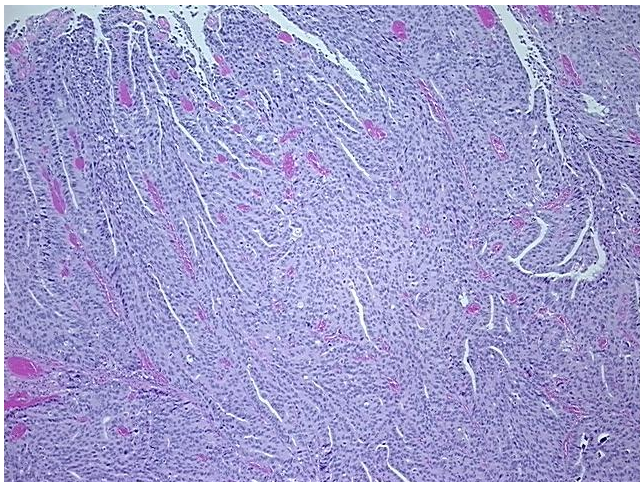


[View online »](#)

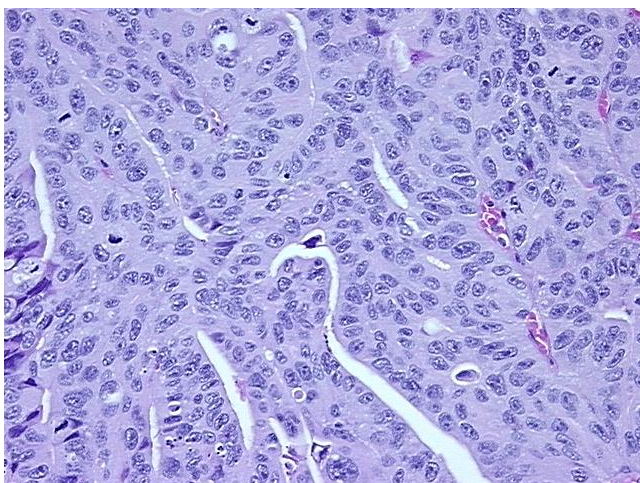
Storage: Store FFPE tissue sections at +4°C.

Stability: All FFPE tissue sections are stable for 1 year from date of purchase.

Product images:



4x Image



20x Image