

Product datasheet for **CS715872**

Tissue FFPE Sections, Endometrium

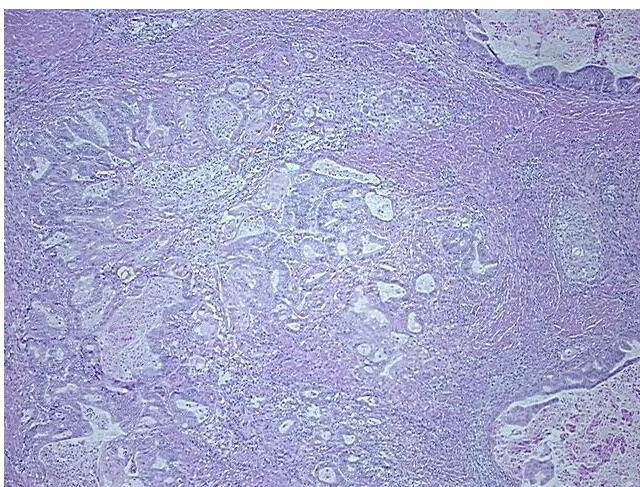
Product data:

Product Type:	FFPE Sections
Disease State:	Cancer
Diagnosis Category:	Endometrial Cancer
Tissue:	Endometrium
Frozen Sample ID:	PA0000BCB1
Case ID:	CI0000020965
Tissue of Origin:	Endometrium
Site of Finding:	Uterus
Appearance:	T
Sample Diagnosis (from Pathology Verification):	Adenocarcinoma of endometrium, endometrioid
Normal:	20%
Lesional:	0%
Tumor:	50%
Tumor Hypo/Acellular Stroma:	0%
Tumor Hypercellular Stroma:	10%
Necrosis:	20%
Pathology Verification notes from H&E review:	Tumor Stroma (Cellular): Desmoplastic reaction, Inflammatory cells; Inflammation: Moderate Mixed inflammatory infiltrate; Other Features/Comments: Tumor area: 20 mm x 4 mm
CASE Diagnosis (from medical center path report):	Adenocarcinoma of endometrium, endometrioid
Age:	60
Gender:	Male
Race:	White or Caucasian

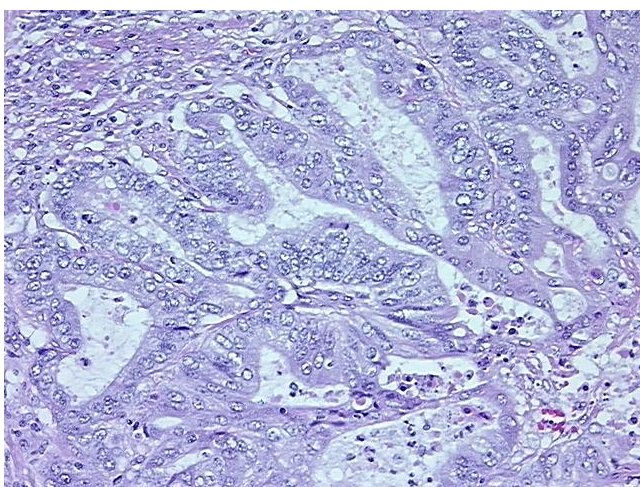


[View online »](#)

Tumor Grade:	FIGO G2: Moderately differentiated
Minimum Stage Grouping:	IIIC
T (Extent of Primary Tumor):	T1c
N (Lymph node metastasis):	N1
M (Distant metastasis):	MX
Storage:	Store FFPE tissue sections at +4°C.
Stability:	All FFPE tissue sections are stable for 1 year from date of purchase.

Product images:

4x Image



20x Image