

Product datasheet for **CS715660**

Tissue FFPE Sections, Joint

Product data:

| | |
|---|--|
| Product Type: | FFPE Sections |
| Disease State: | Other Disease |
| Diagnosis Category: | Arthritis |
| Tissue: | Joint |
| Frozen Sample ID: | PA0000B86C |
| Case ID: | CI0000020443 |
| Tissue of Origin: | Joint |
| Site of Finding: | Joint |
| Appearance: | L |
| Sample Diagnosis (from Pathology Verification): | Osteoarthritis |
| Normal: | 0% |
| Lesional: | 100% |
| Tumor: | 0% |
| Tumor Hypo/Acellular Stroma: | 0% |
| Tumor Hypercellular Stroma: | 0% |
| Necrosis: | 0% |
| Pathology Verification notes from H&E review: | Inflammation: Mild Mixed inflammatory infiltrate; Non Tumor Structures: 80% Ligament and tendon, 20% Synovial membrane; Other Features/Comments: proliferative synovitis present |
| CASE Diagnosis (from medical center path report): | Osteoarthritis |
| Age: | 79 |
| Gender: | Female |
| Race: | White or Caucasian |

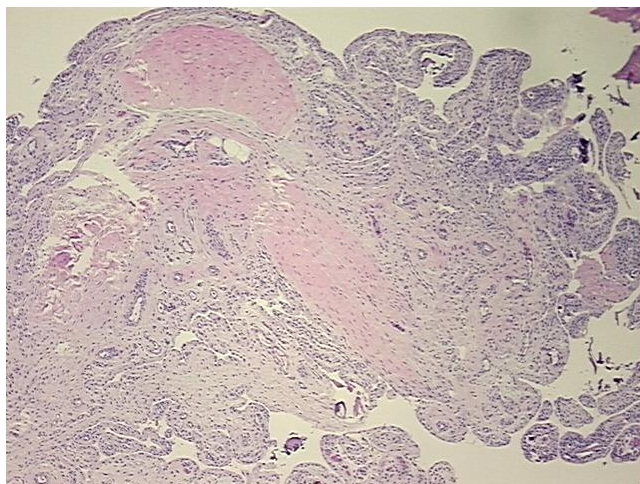


[View online »](#)

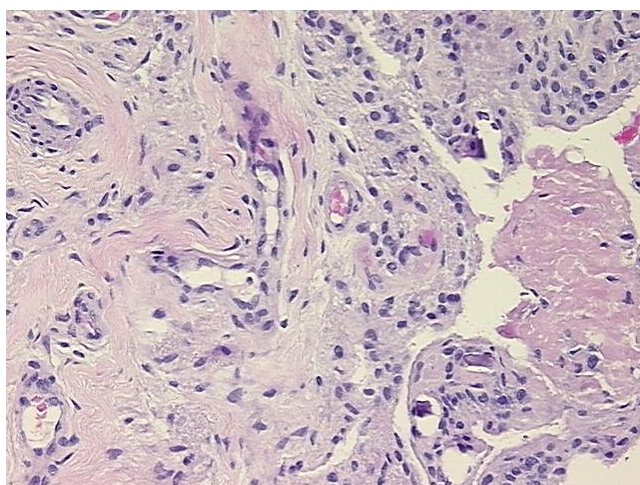
Storage: Store FFPE tissue sections at +4°C.

Stability: All FFPE tissue sections are stable for 1 year from date of purchase.

Product images:



4x Image



20x Image