

Product datasheet for **CS715171**

Tissue FFPE Sections, Breast, left

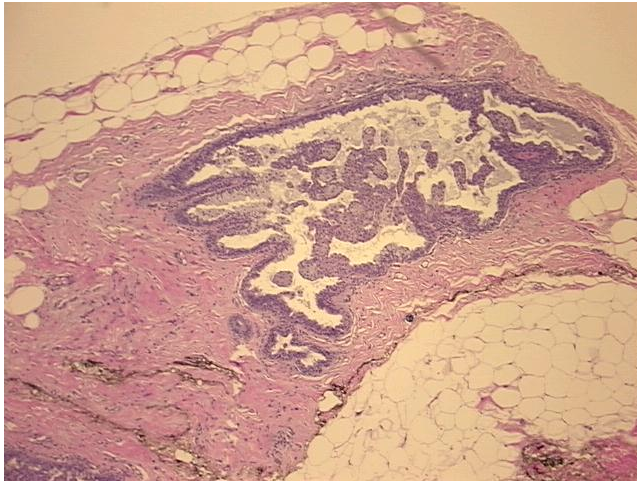
Product data:

Product Type:	FFPE Sections
Disease State:	Cancer
Diagnosis Category:	Breast Cancer
Tissue:	Breast
Frozen Sample ID:	PA0000B48D
Case ID:	CI0000019904
Tissue of Origin:	Breast, left
Site of Finding:	Breast, left
Appearance:	T
Sample Diagnosis (from Pathology Verification):	Carcinoma in situ of breast
Normal:	35%
Lesional:	60%
Tumor:	5%
Tumor Hypo/Acellular Stroma:	0%
Tumor Hypercellular Stroma:	0%
Necrosis:	0%
Pathology Verification notes from H&E review:	Lesion (60%): Fibrocystic changes to breast 100%
CASE Diagnosis (from medical center path report):	Adenocarcinoma of breast, ductal, lobular features
Age:	69
Gender:	Female
Race:	White or Caucasian

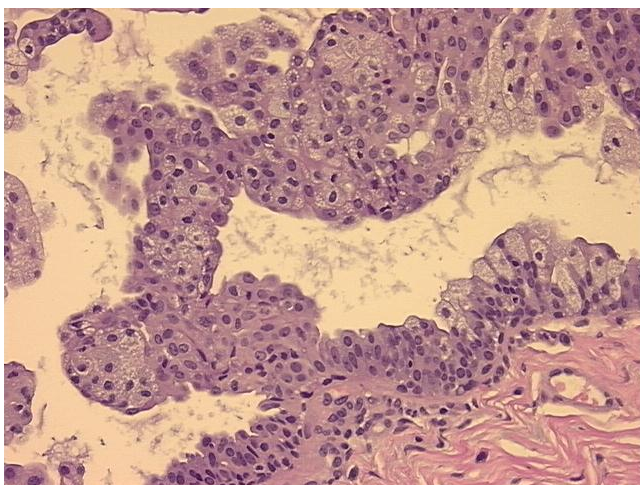


[View online »](#)

Tumor Grade:	Nottingham G3: 8-9 points High combined grade (unfavorable)
Minimum Stage Grouping:	IIB
T (Extent of Primary Tumor):	T2
N (Lymph node metastasis):	N1mi
M (Distant metastasis):	MX
Diagnostic Test Results:	Proliferation index ~ PI,High; Progesterone receptor ~ PR ! by IHC,Positive; Estrogen receptor ~ ER ! by IHC,Positive; DNA ploidy ~ Cell ploidy,Aneuploid: DI not 0.5 or 1.0 or 2.0; ERBB2,No gene abnormality; HER2 ~ ERBB2 ~ Neu ! by IHC,Positiv
Storage:	Store FFPE tissue sections at +4°C.
Stability:	All FFPE tissue sections are stable for 1 year from date of purchase.

Product images:

4x Image



20x Image