

Product datasheet for **CS715124**

Tissue FFPE Sections, Lung: right upper lobe

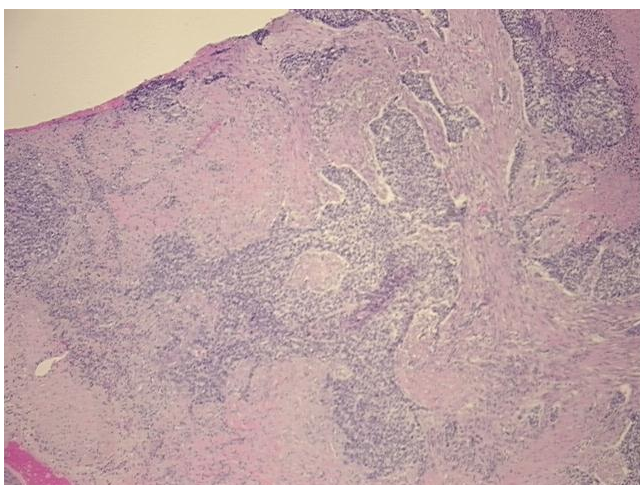
Product data:

Product Type:	FFPE Sections
Disease State:	Cancer
Diagnosis Category:	Lung Cancer
Tissue:	Lung
Frozen Sample ID:	PA0F335F95
Case ID:	CI0000019863
Tissue of Origin:	Lung: right upper lobe
Site of Finding:	Lung: right upper lobe
Appearance:	T
Sample Diagnosis (from Pathology Verification):	Carcinoma of lung, squamous cell (EGFR+)
Normal:	0%
Lesional:	0%
Tumor:	25%
Tumor Hypo/Acellular Stroma:	0%
Tumor Hypercellular Stroma:	10%
Necrosis:	65%
CASE Diagnosis (from medical center path report):	Carcinoma of lung, squamous cell
Age:	65
Gender:	Male
Race:	White or Caucasian
Tumor Grade:	AJCC G3: Poorly differentiated

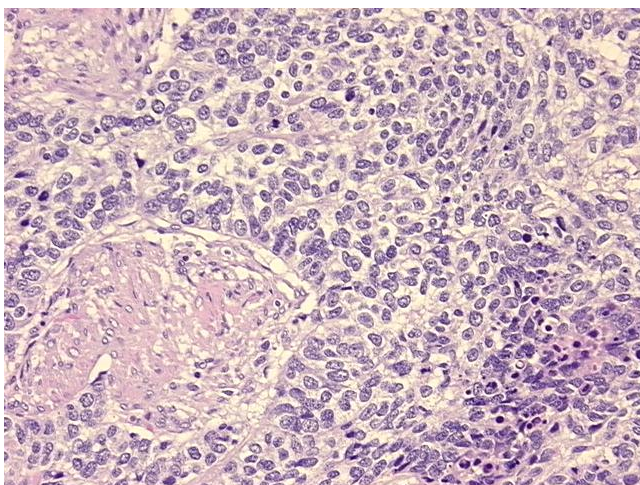


[View online »](#)

Minimum Stage Grouping:	IIB
T (Extent of Primary Tumor):	T3
N (Lymph node metastasis):	N0
M (Distant metastasis):	MX
Diagnostic Test Results:	Verhoeff-Van Gieson ~ Elastin stain,Positive; Cytokeratin (Pan) ~ Keratin, Pan ! by IHC,Positive; Cytokeratins (5 and 6) ~ CK5,6 ! by IHC,Negative; Synaptophysin ~ SYN ! by IHC,Negative; Cytokeratin, high mW ~ 34BE12 ~ CK903 ! by IHC,Negative;
Storage:	Store FFPE tissue sections at +4°C.
Stability:	All FFPE tissue sections are stable for 1 year from date of purchase.

Product images:

4x Image



20x Image