

Product datasheet for **CS715043**

Tissue FFPE Sections, Endometrium

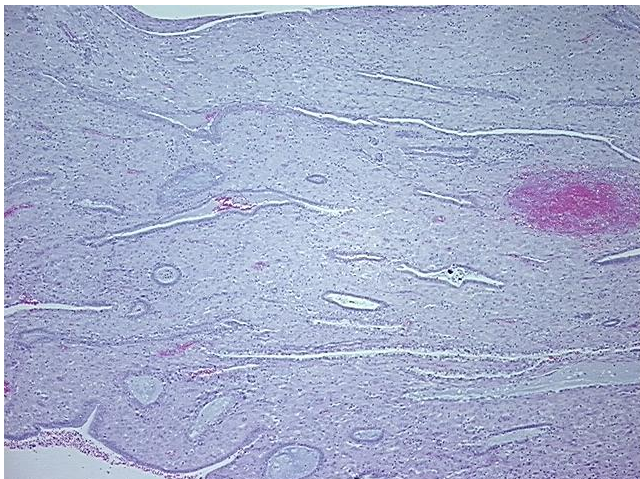
Product data:

Product Type:	FFPE Sections
Disease State:	Normal
Diagnosis Category:	Normal
Tissue:	Uterus
Frozen Sample ID:	PA0000B3C9
Case ID:	CI0000019749
Tissue of Origin:	Endometrium
Site of Finding:	Endometrium
Appearance:	L
Sample Diagnosis (from Pathology Verification):	Endometrium with exogenous hormone effect
Normal:	0%
Lesional:	10%
Tumor:	0%
Tumor Hypo/Acellular Stroma:	0%
Tumor Hypercellular Stroma:	0%
Necrosis:	90%
Pathology Verification notes from H&E review:	Non Tumor Structures: 10% Glands, 90% Decidualized stroma; Other Features/Comments: Viable area: 5 mm x 1.5 mm
Age:	61
Gender:	Female
Race:	White or Caucasian
Storage:	Store FFPE tissue sections at +4°C.
Stability:	All FFPE tissue sections are stable for 1 year from date of purchase.

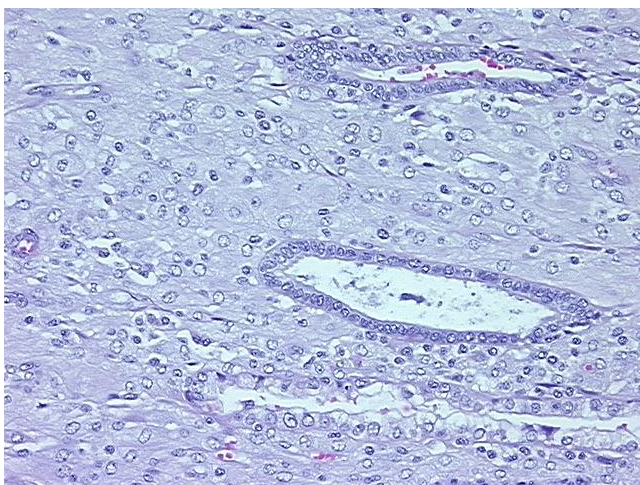


[View online »](#)

Product images:



4x Image



20x Image