

## Product datasheet for **CS715023**

### Tissue FFPE Sections, Unknown tissue consistent with neuroendocrine origin

#### Product data:

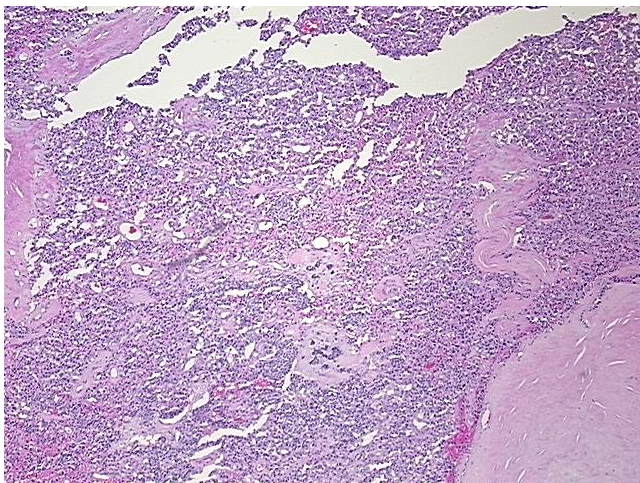
Product Type:	FFPE Sections
Disease State:	Cancer
Diagnosis Category:	Carcinoid/Neuroendocrine Tumors
Tissue:	Unknown origin
Frozen Sample ID:	PA1547891C
Case ID:	CI0000019738
Tissue of Origin:	Unknown tissue consistent with neuroendocrine origin
Site of Finding:	Liver
Appearance:	T
Sample Diagnosis (from Pathology Verification):	Tumor of unknown origin, neuroendocrine, metastatic
Normal:	0%
Lesional:	0%
Tumor:	85%
Tumor Hypo/Acellular Stroma:	0%
Tumor Hypercellular Stroma:	5%
Necrosis:	10%
Pathology Verification notes from H&E review:	Tumor: pancreas and lung are common sites to consider as a primary site.
CASE Diagnosis (from medical center path report):	Carcinoma of unknown origin, neuroendocrine, metastatic
Age:	26
Gender:	Female
Race:	Asian



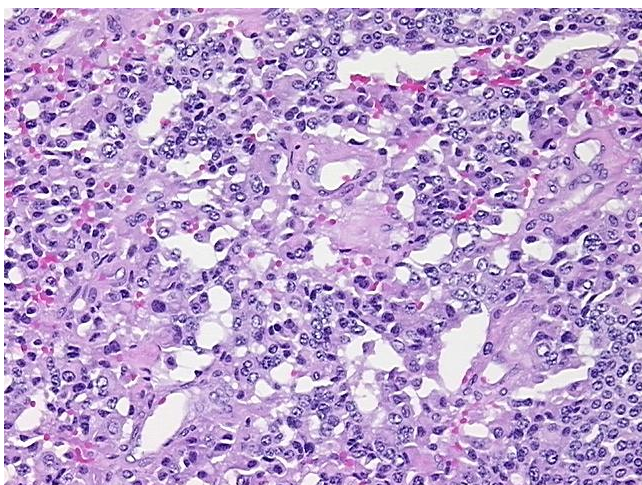
[View online »](#)

Tumor Grade:	Not Reported
Minimum Stage Grouping:	Not Reported
T (Extent of Primary Tumor):	Not Reported
N (Lymph node metastasis):	Not Reported
M (Distant metastasis):	Not Reported
Diagnostic Test Results:	CEAm ~ CEA, monoclonal, Positive, strong; Synaptophysin ~ SYN ! by IHC, Positive, weak; Gastrin ! by IHC, Positive, focal; Cytokeratin, high mW ~ 34BE12 ~ CK903 ! by IHC, Positive, strong; Chromogranin A ~ Parathyroid secretory protein 1 ! by IHC, Po
Storage:	Store FFPE tissue sections at +4°C.
Stability:	All FFPE tissue sections are stable for 1 year from date of purchase.

### Product images:



4x Image



20x Image