

Product datasheet for **CS714645**

Tissue FFPE Sections, Endometrium

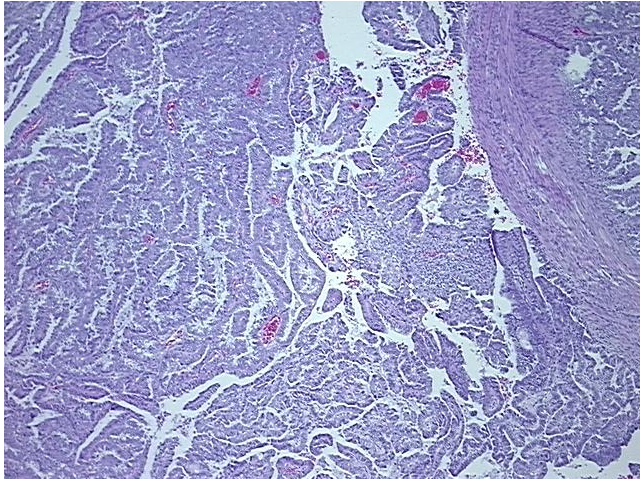
Product data:

Product Type:	FFPE Sections
Disease State:	Cancer
Diagnosis Category:	Endometrial Cancer
Tissue:	Endometrium
Frozen Sample ID:	PA0000AFB8
Case ID:	CI0000019393
Tissue of Origin:	Endometrium
Site of Finding:	Uterus
Appearance:	T
Sample Diagnosis (from Pathology Verification):	Carcinoma of endometrium, papillary serous
Normal:	20%
Lesional:	0%
Tumor:	75%
Tumor Hypo/Acellular Stroma:	5%
Tumor Hypercellular Stroma:	0%
Necrosis:	0%
Pathology Verification notes from H&E review:	Non Tumor Structures: 100% Myometrium; Other Features/Comments: Tumor area: 10 mm x 3 mm
Age:	76
Gender:	Female
Race:	Not reported
Storage:	Store FFPE tissue sections at +4°C.
Stability:	All FFPE tissue sections are stable for 1 year from date of purchase.

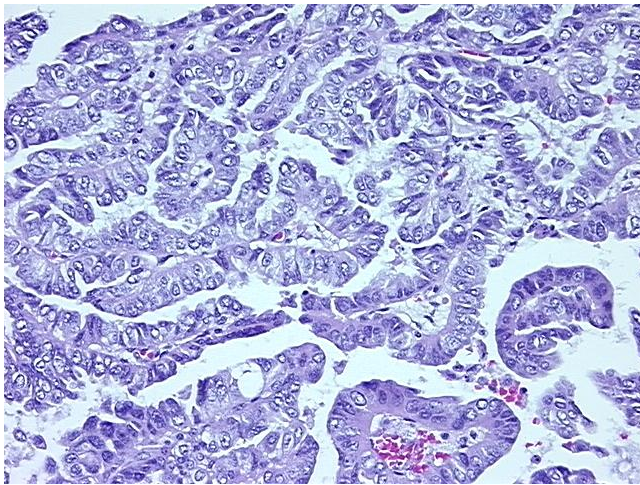


[View online »](#)

Product images:



4x Image



20x Image