

Product datasheet for **CS714264**

Tissue FFPE Sections, Lymphoid tissue

Product data:

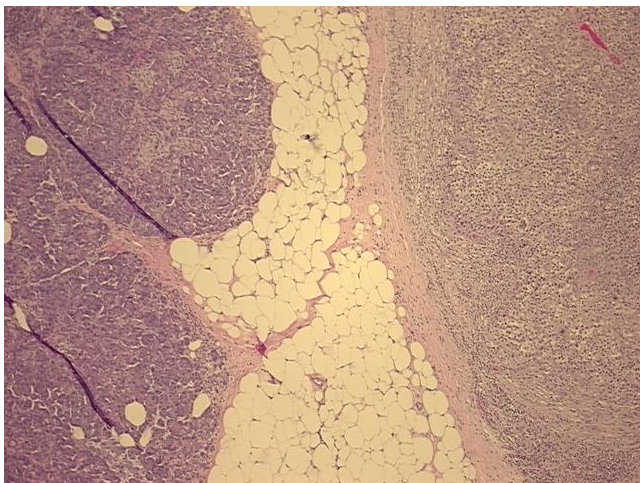
Product Type:	FFPE Sections
Disease State:	Cancer
Diagnosis Category:	Lymphoma
Tissue:	Lymphoid tissue
Frozen Sample ID:	PA0000B110
Case ID:	CI0000018988
Tissue of Origin:	Lymphoid tissue
Site of Finding:	Pancreas
Appearance:	T
Sample Diagnosis (from Pathology Verification):	Lymphoma, large B-cell, diffuse
Normal:	90%
Lesional:	0%
Tumor:	10%
Tumor Hypo/Acellular Stroma:	0%
Tumor Hypercellular Stroma:	0%
Necrosis:	0%
Pathology Verification notes from H&E review:	Non Tumor Structures: 80% Exocrine epithelium, 10% Endocrine epithelium, 10% Ducts
CASE Diagnosis (from medical center path report):	Lymphoma, large B-cell, diffuse
Age:	58
Gender:	Male
Race:	White or Caucasian



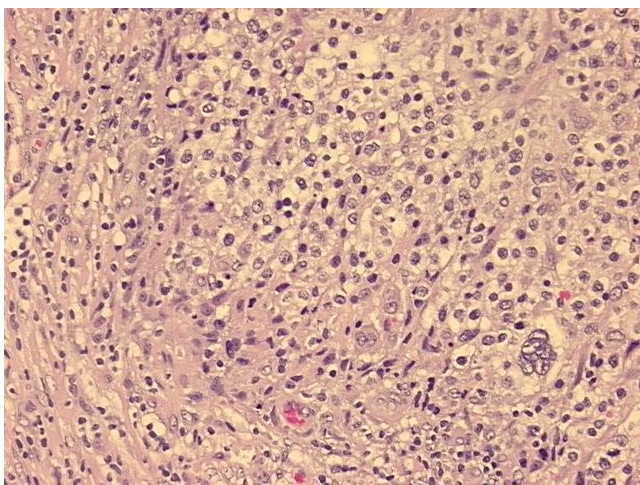
[View online »](#)

Tumor Grade:	Not Reported
Minimum Stage Grouping:	IIE
T (Extent of Primary Tumor):	Not applicable
N (Lymph node metastasis):	Not applicable
M (Distant metastasis):	Not applicable
Diagnostic Test Results:	CD3 polyclonal, Positive in scattered cells; CD45 ~ Leukocyte common antigen ! by IHC, Positive; CD79a ~ Ig alpha ! by IHC, Positive; Cytokeratin AE1/AE3 ~ AE1/AE3 ! by IHC, Negative; CD20 ~ B1 ~ Leu16 ! by IHC, Negative
Storage:	Store FFPE tissue sections at +4°C.
Stability:	All FFPE tissue sections are stable for 1 year from date of purchase.

Product images:



4x Image



20x Image