

## Product datasheet for **CS714055**

### Tissue FFPE Sections, Soft tissue

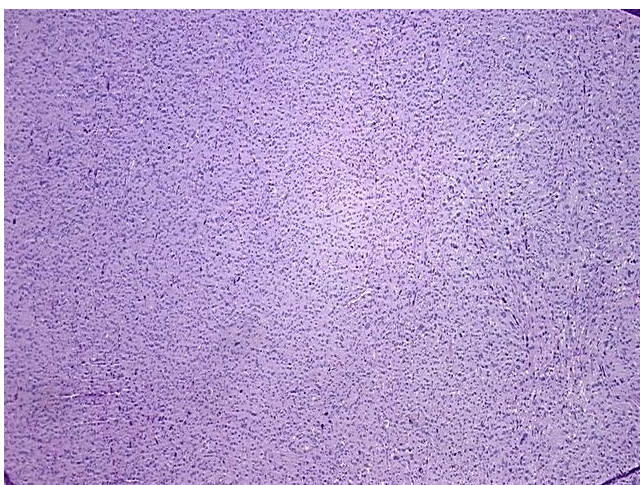
#### Product data:

Product Type:	FFPE Sections
Disease State:	Cancer
Diagnosis Category:	Sarcoma
Tissue:	Soft tissue
Frozen Sample ID:	PA15478809
Case ID:	CI0000018708
Tissue of Origin:	Soft tissue
Site of Finding:	Thigh
Appearance:	T
Sample Diagnosis (from Pathology Verification):	Sarcoma, pleomorphic
Normal:	0%
Lesional:	0%
Tumor:	99%
Tumor Hypo/Acellular Stroma:	0%
Tumor Hypercellular Stroma:	1%
Necrosis:	0%
CASE Diagnosis (from medical center path report):	Sarcoma, pleomorphic
Age:	34
Gender:	Female
Race:	White or Caucasian
Tumor Grade:	AJCC G3-4: Poorly differentiated or undifferentiated

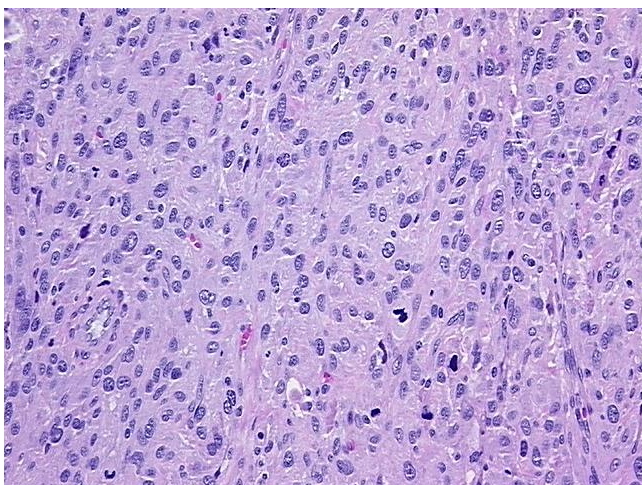


[View online »](#)

Minimum Stage Grouping:	III
T (Extent of Primary Tumor):	T2b
N (Lymph node metastasis):	NX
M (Distant metastasis):	MX
Diagnostic Test Results:	Smooth muscle actin ~ SMA ~ Alpha-SMA ! by IHC,Negative; Vimentin ~ VIM ! by IHC,Positive; Proliferating cell nuclear antigen ~ PCNA ! by IHC,Equivocal; S100 protein,Negative; Desmin ! by IHC,Negative; Cyclin D1 ~ BCL1 ! by IHC,Equivocal; Cytokeratin ~ CK ! by IHC,Negative
Storage:	Store FFPE tissue sections at +4°C.
Stability:	All FFPE tissue sections are stable for 1 year from date of purchase.

**Product images:**

4x Image



20x Image