

## Product datasheet for **CS714043**

### Tissue FFPE Sections, Kidney

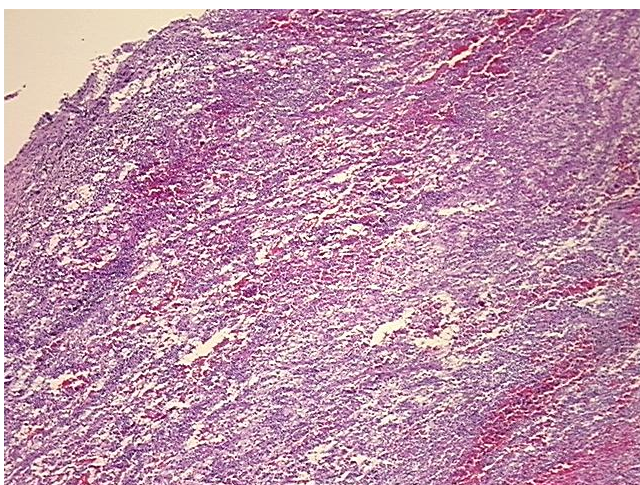
#### Product data:

Product Type:	FFPE Sections
Disease State:	Cancer
Diagnosis Category:	Renal Cell Carcinoma
Tissue:	Kidney
Frozen Sample ID:	PA0000A97F
Case ID:	CI0000018694
Tissue of Origin:	Kidney
Site of Finding:	Kidney
Appearance:	T
Sample Diagnosis (from Pathology Verification):	Carcinoma of kidney, renal cell, clear cell, sarcomatoid features
Normal:	0%
Lesional:	0%
Tumor:	20%
Tumor Hypo/Acellular Stroma:	0%
Tumor Hypercellular Stroma:	10%
Necrosis:	70%
CASE Diagnosis (from medical center path report):	Carcinoma of kidney, renal cell, clear cell, sarcomatoid features
Age:	74
Gender:	Female
Race:	White or Caucasian
Tumor Grade:	Fuhrman G4: Nuclei bizarre and multilobated

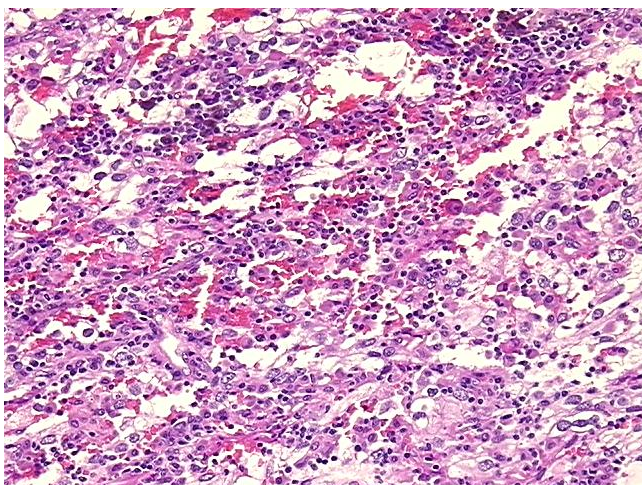


[View online »](#)

Minimum Stage Grouping:	II
T (Extent of Primary Tumor):	T2
N (Lymph node metastasis):	N0
M (Distant metastasis):	MX
Diagnostic Test Results:	CD141 ~ Thrombomodulin ~ Fetomodulin ! by IHC,Negative; Cytokeratin (Pan) ~ Keratin, Pan ! by IHC,Positive; Chromosome number,No abnormal chromosome number; Vimentin ~ VIM ! by IHC,Positive; Cytokeratin 7 ~ CK7 ! by IHC,Negative; Cytokeratin 20
Storage:	Store FFPE tissue sections at +4°C.
Stability:	All FFPE tissue sections are stable for 1 year from date of purchase.

**Product images:**

4x Image



20x Image