

Product datasheet for **CS713961**

Tissue FFPE Sections, Lung: right upper lobe

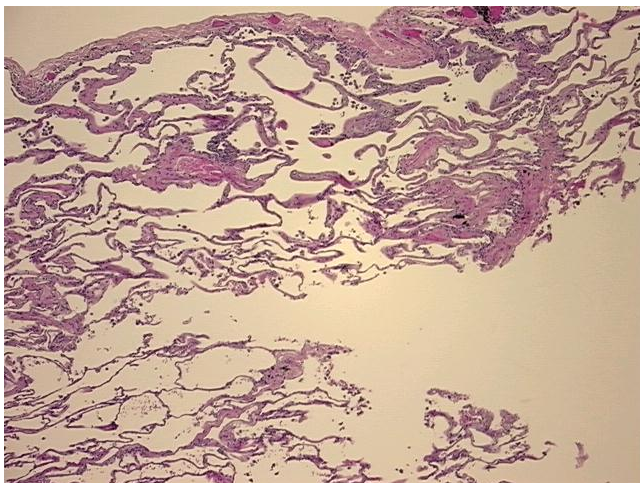
Product data:

Product Type:	FFPE Sections
Disease State:	Other Disease
Diagnosis Category:	Chronic Obstructive Pulmonary Disease (COPD)
Tissue:	Lung
Frozen Sample ID:	PA0F334FBC
Case ID:	CI0000018616
Tissue of Origin:	Lung: right upper lobe
Site of Finding:	Lung: right upper lobe
Appearance:	L
Sample Diagnosis (from Pathology Verification):	Emphysematous changes
Normal:	0%
Lesional:	100%
Tumor:	0%
Tumor Hypo/Acellular Stroma:	0%
Tumor Hypercellular Stroma:	0%
Necrosis:	0%
Pathology Verification notes from H&E review:	No normal architecture in lesional component
CASE Diagnosis (from medical center path report):	Carcinoma of lung, large cell, neuroendocrine
Age:	72
Gender:	Female
Race:	White or Caucasian

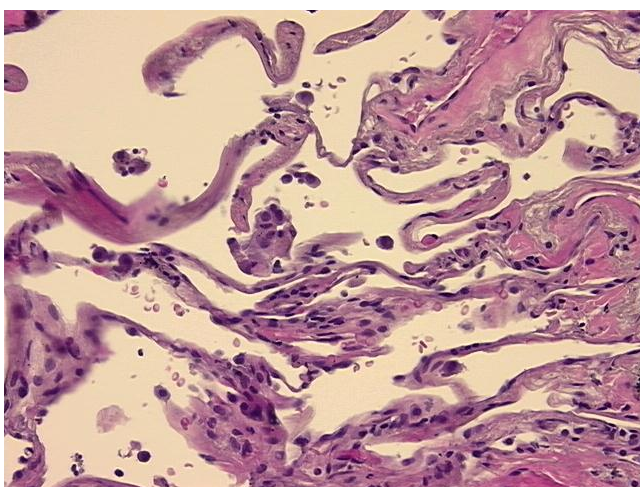


[View online »](#)

Tumor Grade:	AJCC G3: Poorly differentiated
Minimum Stage Grouping:	IB
T (Extent of Primary Tumor):	T2
N (Lymph node metastasis):	N0
M (Distant metastasis):	MX
Diagnostic Test Results:	CD56 ~ NCAM ~ NKH1 ! by IHC,Negative; Synaptophysin ~ SYN ! by IHC,Negative; ERBB1 ~ EGFR ~ Epidermal growth factor receptor ! by IHC,Negative; Chromogranin A ~ Parathyroid secretory protein 1 ! by IHC,Positive, focal; HER2 ~ ERBB2 ~ Neu !
Storage:	Store FFPE tissue sections at +4°C.
Stability:	All FFPE tissue sections are stable for 1 year from date of purchase.

Product images:

4x Image



20x Image