

Product datasheet for **CS713938**

Tissue FFPE Sections, Cervix

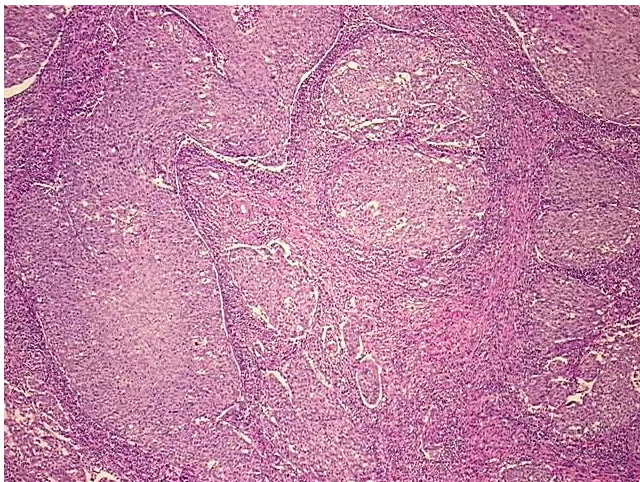
Product data:

| | |
|---|--|
| Product Type: | FFPE Sections |
| Disease State: | Cancer |
| Diagnosis Category: | Cervical Cancer |
| Tissue: | Cervix |
| Frozen Sample ID: | PA0000A945 |
| Case ID: | CI0000018579 |
| Tissue of Origin: | Cervix |
| Site of Finding: | Cervix |
| Appearance: | Tumor |
| Sample Diagnosis (from Pathology Verification): | Carcinoma of cervix, squamous cell, large cell, non-keratinizing |
| Normal: | 0% |
| Lesional: | 0% |
| Tumor: | 90% |
| Tumor Hypo/Acellular Stroma: | 5% |
| Tumor Hypercellular Stroma: | 5% |
| Necrosis: | 0% |
| CASE Diagnosis (from medical center path report): | Carcinoma of cervix, squamous cell, large cell, non-keratinizing |
| Age: | 59 |
| Gender: | Female |
| Tumor Grade: | Not Reported |
| Minimum Stage Grouping: | IIIB |

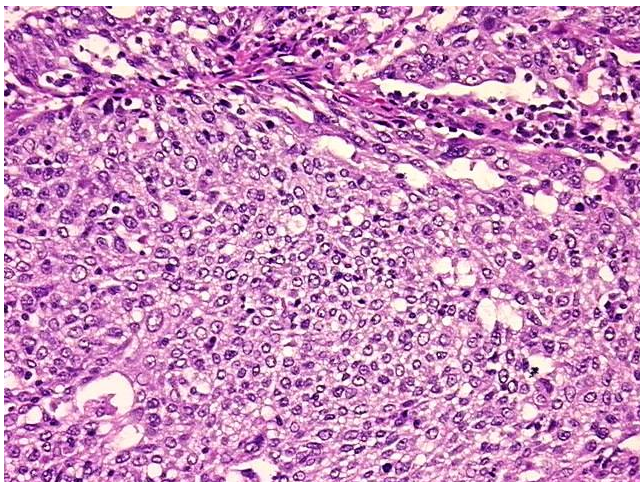


[View online »](#)

| | |
|------------------------------|---|
| T (Extent of Primary Tumor): | pT1b1 |
| N (Lymph node metastasis): | pN1 |
| M (Distant metastasis): | pMX |
| Storage: | Store FFPE tissue sections at +4°C. |
| Stability: | All FFPE tissue sections are stable for 1 year from date of purchase. |

Product images:

4x Image



20x Image