

Product datasheet for **CS713785**

Tissue FFPE Sections, Endometrium

Product data:

Product Type:	FFPE Sections
Disease State:	Cancer
Diagnosis Category:	Endometrial Cancer
Tissue:	Endometrium
Frozen Sample ID:	PA0000B927
Case ID:	CI0000018372
Tissue of Origin:	Endometrium
Site of Finding:	Omentum
Appearance:	T
Sample Diagnosis (from Pathology Verification):	Adenocarcinoma of endometrium, papillary serous, metastatic
Normal:	60%
Lesional:	0%
Tumor:	5%
Tumor Hypo/Acellular Stroma:	0%
Tumor Hypercellular Stroma:	35%
Necrosis:	0%
Pathology Verification notes from H&E review:	Tumor Stroma (Cellular): Desmoplastic reaction, Psammoma bodies; Non Tumor Structures: 100% Adipose tissue; Other Features/Comments: Sample area: 15 mm x 4 mm
CASE Diagnosis (from medical center path report):	Adenocarcinoma of endometrium, serous
Age:	73
Gender:	Female
Race:	Not reported

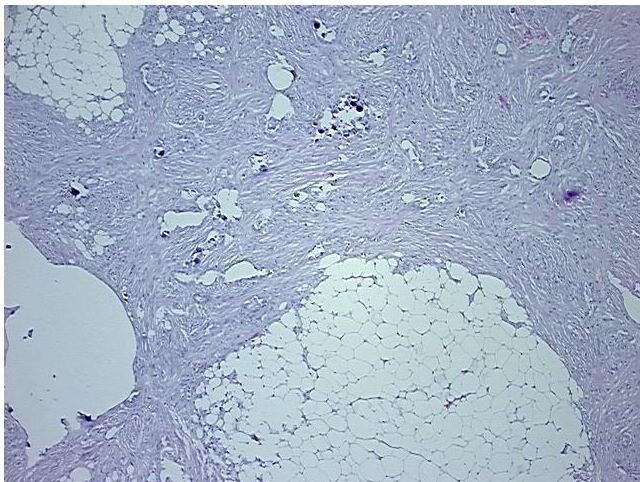


[View online »](#)

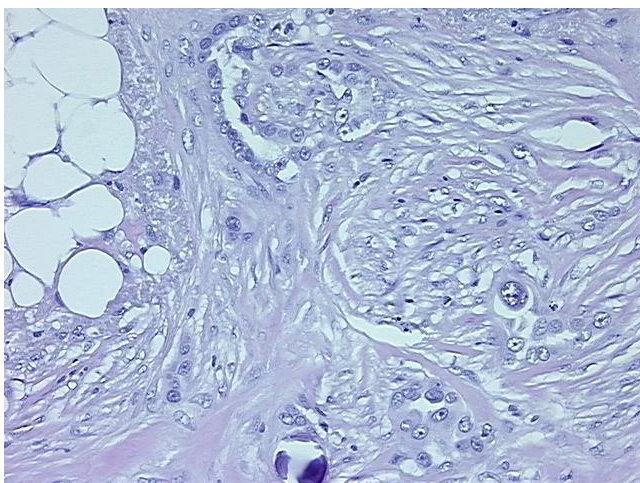
Storage: Store FFPE tissue sections at +4°C.

Stability: All FFPE tissue sections are stable for 1 year from date of purchase.

Product images:



4x Image



20x Image