

Product datasheet for **CS713751**

Tissue FFPE Sections, Colon

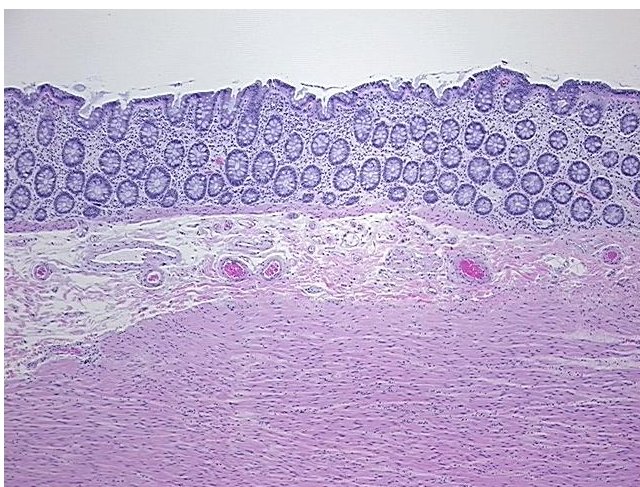
Product data:

Product Type:	FFPE Sections
Disease State:	Normal
Diagnosis Category:	Normal
Tissue:	Colon
Frozen Sample ID:	PA0000A80A
Case ID:	CI0000018261
Tissue of Origin:	Colon
Site of Finding:	Colon
Appearance:	R
Sample Diagnosis (from Pathology Verification):	Within normal limits
Normal:	100%
Lesional:	0%
Tumor:	0%
Tumor Hypo/Acellular Stroma:	0%
Tumor Hypercellular Stroma:	0%
Necrosis:	0%
Pathology Verification notes from H&E review:	Non Tumor Structures: 25% Mucosa, 15% Submucosa, 60% Muscle
CASE Diagnosis (from medical center path report):	Adenocarcinoma of colon
Age:	75
Gender:	Male
Race:	White or Caucasian

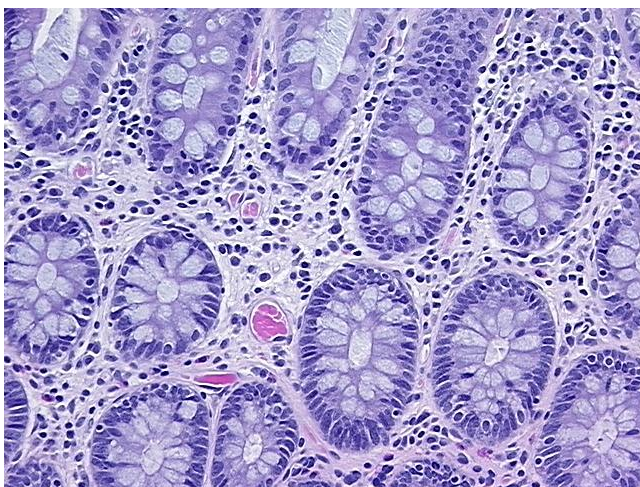


[View online »](#)

Tumor Grade:	AJCC G2: Moderately differentiated
Minimum Stage Grouping:	IIA
T (Extent of Primary Tumor):	T3
N (Lymph node metastasis):	N0
M (Distant metastasis):	MX
Storage:	Store FFPE tissue sections at +4°C.
Stability:	All FFPE tissue sections are stable for 1 year from date of purchase.

Product images:

4x Image



20x Image