

## Product datasheet for CS713021

### Tissue FFPE Sections, Thyroid gland

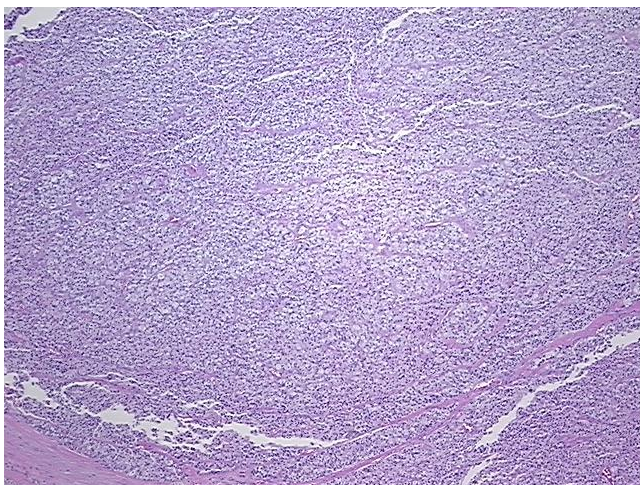
#### Product data:

|                                                   |                                                                                                             |
|---------------------------------------------------|-------------------------------------------------------------------------------------------------------------|
| Product Type:                                     | FFPE Sections                                                                                               |
| Disease State:                                    | Cancer                                                                                                      |
| Diagnosis Category:                               | Thyroid Cancer                                                                                              |
| Tissue:                                           | Thyroid gland                                                                                               |
| Frozen Sample ID:                                 | PA15478872                                                                                                  |
| Case ID:                                          | CI0000017163                                                                                                |
| Tissue of Origin:                                 | Thyroid gland                                                                                               |
| Site of Finding:                                  | Thyroid gland                                                                                               |
| Appearance:                                       | T                                                                                                           |
| Sample Diagnosis (from Pathology Verification):   | Carcinoma of thyroid, follicular                                                                            |
| Normal:                                           | 0%                                                                                                          |
| Lesional:                                         | 0%                                                                                                          |
| Tumor:                                            | 95%                                                                                                         |
| Tumor Hypo/Acellular Stroma:                      | 5%                                                                                                          |
| Tumor Hypercellular Stroma:                       | 0%                                                                                                          |
| Necrosis:                                         | 0%                                                                                                          |
| Pathology Verification notes from H&E review:     | Tumor: with predominantly clear cell changes; Other Features/Comments: Tumor: predominantly clear cell type |
| CASE Diagnosis (from medical center path report): | Carcinoma of thyroid, follicular                                                                            |
| Age:                                              | 71                                                                                                          |
| Gender:                                           | Male                                                                                                        |
| Race:                                             | White or Caucasian                                                                                          |

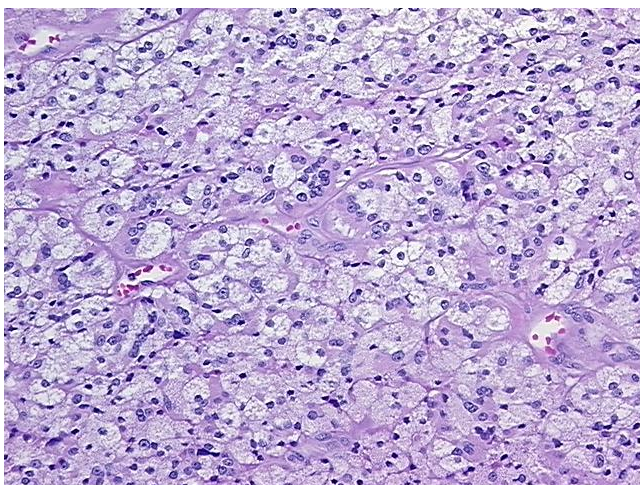


[View online »](#)

|                              |                                                                       |
|------------------------------|-----------------------------------------------------------------------|
| Tumor Grade:                 | Not Reported                                                          |
| Minimum Stage Grouping:      | III                                                                   |
| T (Extent of Primary Tumor): | T3                                                                    |
| N (Lymph node metastasis):   | N0                                                                    |
| M (Distant metastasis):      | MX                                                                    |
| Storage:                     | Store FFPE tissue sections at +4°C.                                   |
| Stability:                   | All FFPE tissue sections are stable for 1 year from date of purchase. |

**Product images:**

4x Image



20x Image