

Product datasheet for **CS712934**

Tissue FFPE Sections, Uterus

Product data:

Product Type:	FFPE Sections
Disease State:	Normal
Diagnosis Category:	Normal
Tissue:	Uterus
Frozen Sample ID:	PA0000A801
Case ID:	CI0000016985
Tissue of Origin:	Uterus
Site of Finding:	Uterus
Appearance:	L
Sample Diagnosis (from Pathology Verification):	Endometrium, proliferative
Normal:	0%
Lesional:	100%
Tumor:	0%
Tumor Hypo/Acellular Stroma:	0%
Tumor Hypercellular Stroma:	0%
Necrosis:	0%
Pathology Verification notes from H&E review:	Non Tumor Structures: 30% Glands, 20% Stroma, 50% Myometrium
CASE Diagnosis (from medical center path report):	Crohns disease
Age:	30
Gender:	Female
Race:	White or Caucasian

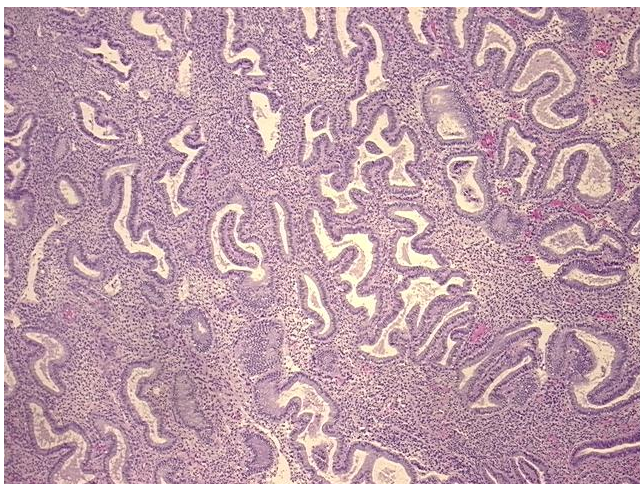


[View online »](#)

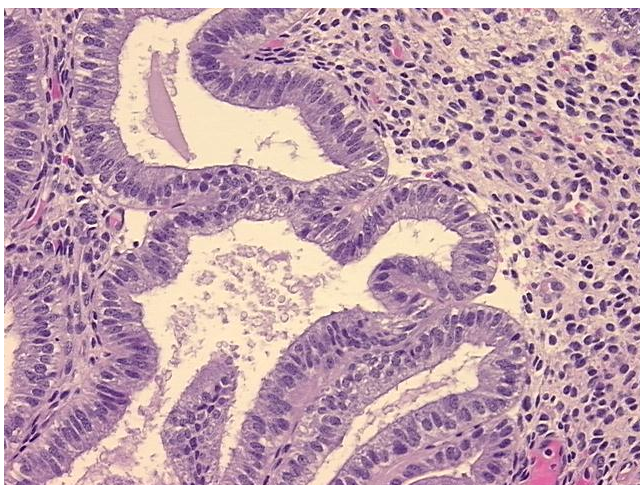
Storage: Store FFPE tissue sections at +4°C.

Stability: All FFPE tissue sections are stable for 1 year from date of purchase.

Product images:



4x Image



20x Image