

## Product datasheet for **CS712669**

### Tissue FFPE Sections, Breast

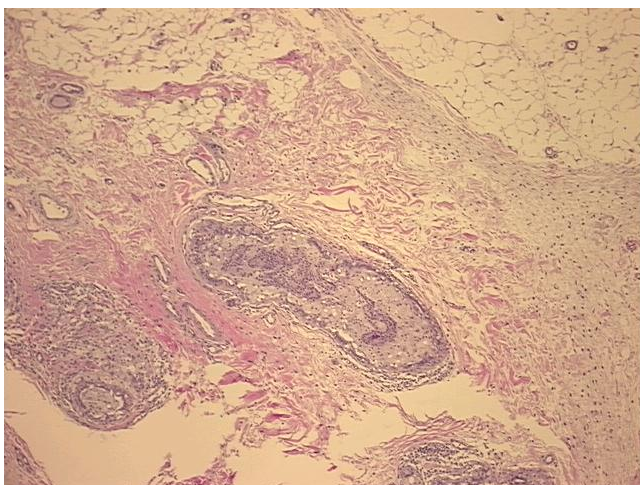
#### Product data:

|   |   |
|---|---|
| Product Type:                                     | FFPE Sections                           |
| Disease State:                                    | Cancer                                  |
| Diagnosis Category:                               | Breast Cancer                           |
| Tissue:   | Breast                                  |
| Frozen Sample ID:                                 | PA0F335B66                              |
| Case ID:  | CI0000016606                            |
| Tissue of Origin:                                 | Breast                                  |
| Site of Finding:                                  | Breast                                  |
| Appearance:                                       | T                                       |
| Sample Diagnosis (from Pathology Verification):   | Carcinoma in situ of breast             |
| Normal:   | 50%                                     |
| Lesional:   | 30%                                     |
| Tumor:  | 10%                                     |
| Tumor Hypo/Acellular Stroma:                      | 0%                                      |
| Tumor Hypercellular Stroma:                       | 0%                                      |
| Necrosis:   | 10%                                     |
| Pathology Verification notes from H&E review:     | Lesion (30%): Biopsy site changes 100%  |
| CASE Diagnosis (from medical center path report): | Adenocarcinoma of breast, ductal, focal |
| Age:  | 49                                      |
| Gender:   | Female                                  |
| Race:   | White or Caucasian                      |

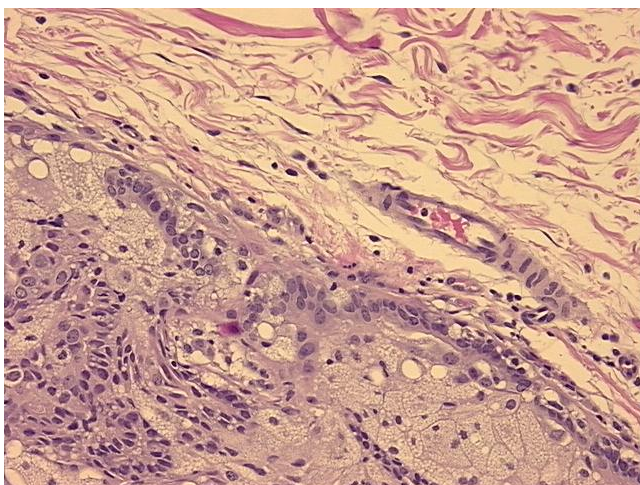


[View online »](#)

|                                     |  |
|-------------------------------------|--|
| <b>Tumor Grade:</b>                 | Nottingham G2: 6-7 points Intermediate combined grade (moderately favorable)   |
| <b>Minimum Stage Grouping:</b>      | I  |
| <b>T (Extent of Primary Tumor):</b> | T1mic  |
| <b>N (Lymph node metastasis):</b>   | N0   |
| <b>M (Distant metastasis):</b>      | MX   |
| <b>Diagnostic Test Results:</b>     | Progesterone receptor ~ PR ! by IHC,Negative; Estrogen receptor ~ ER ! by IHC,Positive, focal; HER2 ~ ERBB2 ~ Neu ! by IHC,Positive; Cytokeratin AE1/AE3 ~ AE1/AE3 ! by IHC,Positive |
| <b>Storage:</b>                     | Store FFPE tissue sections at +4°C.  |
| <b>Stability:</b>                   | All FFPE tissue sections are stable for 1 year from date of purchase.  |

**Product images:**

4x Image



20x Image