

Product datasheet for CS712666

Tissue FFPE Sections, Breast

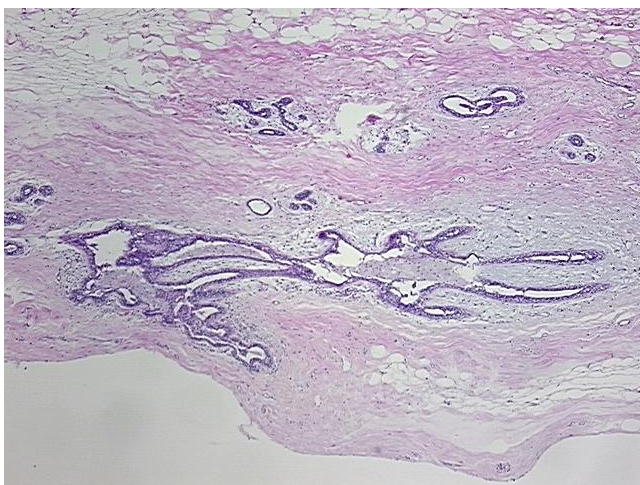
Product data:

| | |
|---|--|
| Product Type: | FFPE Sections |
| Disease State: | Other Disease |
| Diagnosis Category: | Fibrocystic Breast |
| Tissue: | Breast |
| Frozen Sample ID: | PA00009388 |
| Case ID: | CI0000016606 |
| Tissue of Origin: | Breast |
| Site of Finding: | Breast |
| Appearance: | L |
| Sample Diagnosis (from Pathology Verification): | Fibrocystic changes to breast |
| Normal: | 90% |
| Lesional: | 10% |
| Tumor: | 0% |
| Tumor Hypo/Acellular Stroma: | 0% |
| Tumor Hypercellular Stroma: | 0% |
| Necrosis: | 0% |
| Pathology Verification notes from H&E review: | Non Tumor Structures: 10% Glandular epithelium, 50% Stroma, 40% Adipose tissue |
| CASE Diagnosis (from medical center path report): | Adenocarcinoma of breast, ductal, focal |
| Age: | 49 |
| Gender: | Female |
| Race: | White or Caucasian |

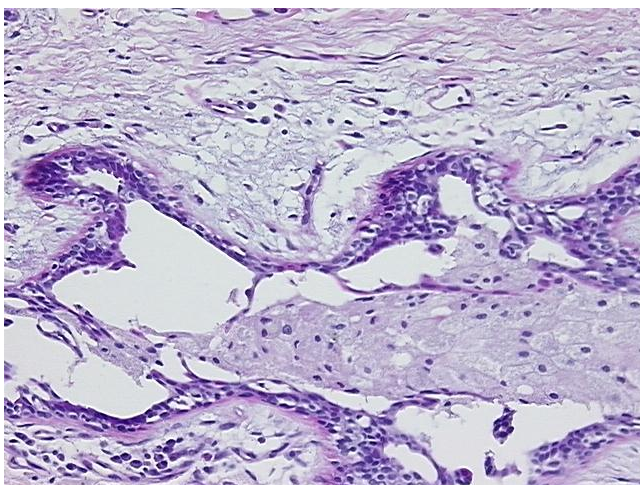


[View online »](#)

| | |
|-------------------------------------|--|
| Tumor Grade: | Nottingham G2: 6-7 points Intermediate combined grade (moderately favorable) |
| Minimum Stage Grouping: | I |
| T (Extent of Primary Tumor): | T1mic |
| N (Lymph node metastasis): | N0 |
| M (Distant metastasis): | MX |
| Diagnostic Test Results: | Progesterone receptor ~ PR ! by IHC,Negative; Estrogen receptor ~ ER ! by IHC,Positive, focal; HER2 ~ ERBB2 ~ Neu ! by IHC,Positive; Cytokeratin AE1/AE3 ~ AE1/AE3 ! by IHC,Positive |
| Storage: | Store FFPE tissue sections at +4°C. |
| Stability: | All FFPE tissue sections are stable for 1 year from date of purchase. |

Product images:

4x Image



20x Image