

Product datasheet for **CS712486**

Tissue FFPE Sections, Meninges

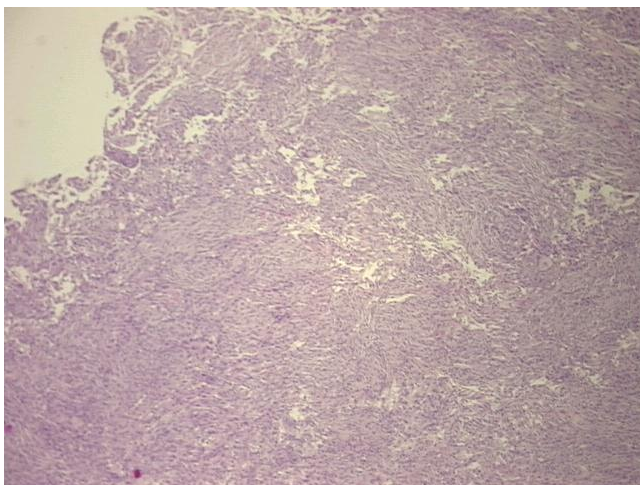
Product data:

Product Type:	FFPE Sections
Disease State:	Other Disease
Diagnosis Category:	Meningioma
Tissue:	Brain
Frozen Sample ID:	PA00009C40
Case ID:	CI0000015807
Tissue of Origin:	Meninges
Site of Finding:	Brain
Appearance:	T
Sample Diagnosis (from Pathology Verification):	Meningioma, meningothelial
Normal:	0%
Lesional:	0%
Tumor:	90%
Tumor Hypo/Acellular Stroma:	5%
Tumor Hypercellular Stroma:	5%
Necrosis:	0%
CASE Diagnosis (from medical center path report):	Meningioma, meningothelial
Age:	77
Gender:	Female
Race:	White or Caucasian
Tumor Grade:	WHO Grade I

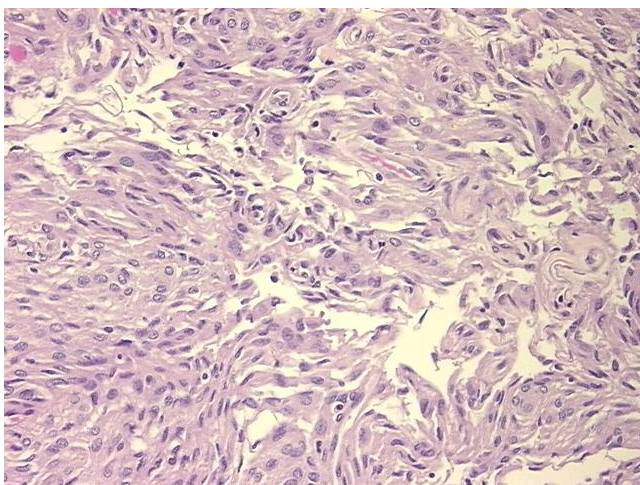


[View online »](#)

Minimum Stage Grouping:	Not Reported
T (Extent of Primary Tumor):	Not Reported
N (Lymph node metastasis):	Not Reported
M (Distant metastasis):	Not Reported
Diagnostic Test Results:	Proliferation index ~ PI,Low; Luteinizing Hormone ~ LH,Positive, focal; Thyroid Stimulating Hormone ~ TSH,Positive, focal; Growth hormone ~ GH ! by IHC,Positive, focal; Prolactin ~ Luteotropic hormone ~ Lactogenic hormone ! by IHC,Positive, fo
Storage:	Store FFPE tissue sections at +4°C.
Stability:	All FFPE tissue sections are stable for 1 year from date of purchase.

Product images:

4x Image



20x Image