

## Product datasheet for **CS712380**

### Tissue FFPE Sections, Thyroid gland

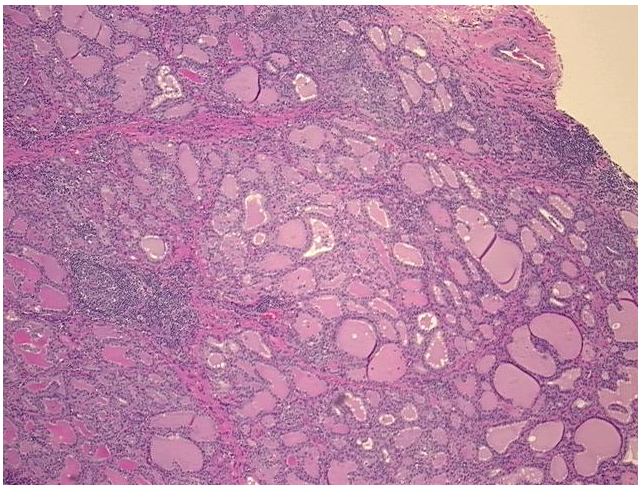
#### Product data:

|   |   |
|---|---|
| Product Type:                                     | FFPE Sections   |
| Disease State:                                    | Other Disease   |
| Diagnosis Category:                               | Thyroiditis   |
| Tissue:   | Thyroid gland   |
| Frozen Sample ID:                                 | PA0F335D0B  |
| Case ID:  | CI0000015638  |
| Tissue of Origin:                                 | Thyroid gland   |
| Site of Finding:                                  | Thyroid gland   |
| Appearance:                                       | L   |
| Sample Diagnosis (from Pathology Verification):   | Thyroiditis, lymphocytic  |
| Normal:   | 0%  |
| Lesional:   | 100%  |
| Tumor:  | 0%  |
| Tumor Hypo/Acellular Stroma:                      | 0%  |
| Tumor Hypercellular Stroma:                       | 0%  |
| Necrosis:   | 0%  |
| Pathology Verification notes from H&E review:     | Inflammation: Severe Lymphoid infiltrate; Non Tumor Structures: 85% Thyroid follicles, 15% Fibrous stroma |
| CASE Diagnosis (from medical center path report): | Carcinoma of thyroid, papillary   |
| Age:  | 49  |
| Gender:   | Female  |
| Race:   | Black or African American   |

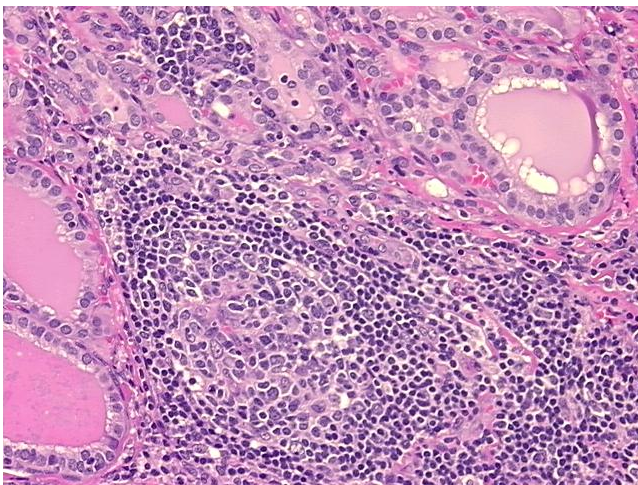


[View online »](#)

|                              |   |
|------------------------------|---|
| Tumor Grade:                 | Not Reported  |
| Minimum Stage Grouping:      | I   |
| T (Extent of Primary Tumor): | T1  |
| N (Lymph node metastasis):   | N0  |
| M (Distant metastasis):      | MX  |
| Storage:                     | Store FFPE tissue sections at +4°C.                                   |
| Stability:                   | All FFPE tissue sections are stable for 1 year from date of purchase. |

**Product images:**

4x Image



20x Image