

Product datasheet for **CS711753**

Tissue FFPE Sections, Breast

Product data:

| | |
|---------------------------------------------------|------------------------------------------------------------------------------|
| Product Type: | FFPE Sections |
| Disease State: | Normal |
| Diagnosis Category: | Normal |
| Tissue: | Breast |
| Frozen Sample ID: | PA000091E6 |
| Case ID: | CI0000015203 |
| Tissue of Origin: | Breast |
| Site of Finding: | Breast |
| Appearance: | R |
| Sample Diagnosis (from Pathology Verification): | Within normal limits |
| Normal: | 100% |
| Lesional: | 0% |
| Tumor: | 0% |
| Tumor Hypo/Acellular Stroma: | 0% |
| Tumor Hypercellular Stroma: | 0% |
| Necrosis: | 0% |
| Pathology Verification notes from H&E review: | Non Tumor Structures: 5% Glandular epithelium, 5% Stroma, 90% Adipose tissue |
| CASE Diagnosis (from medical center path report): | No pathologic disease |
| Age: | 35 |
| Gender: | Female |
| Race: | White or Caucasian |

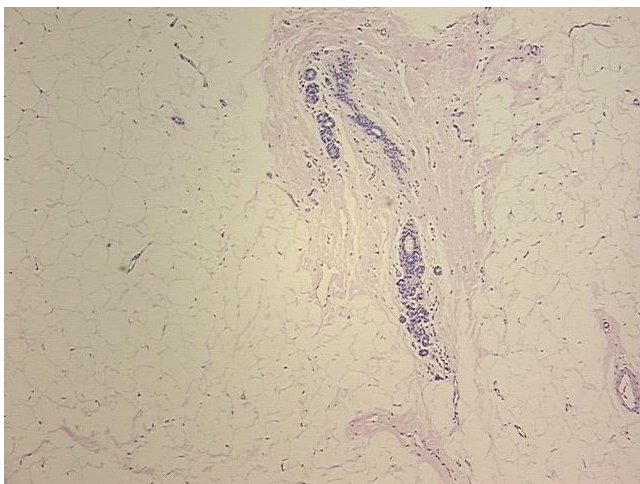


[View online »](#)

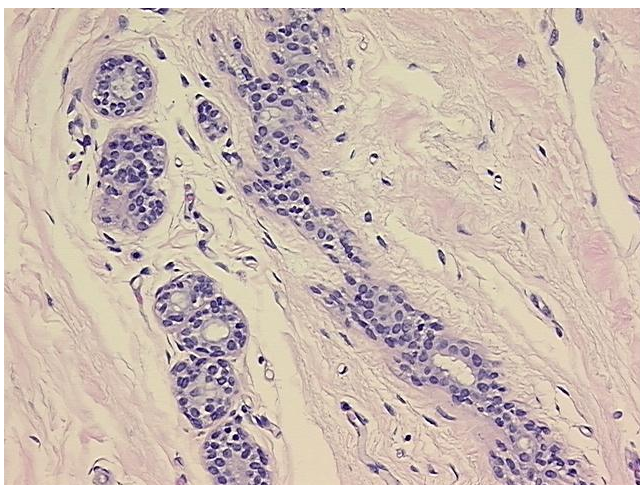
Storage: Store FFPE tissue sections at +4°C.

Stability: All FFPE tissue sections are stable for 1 year from date of purchase.

Product images:



4x Image



20x Image