

## Product datasheet for **CS711639**

### Tissue FFPE Sections, Lung

#### Product data:

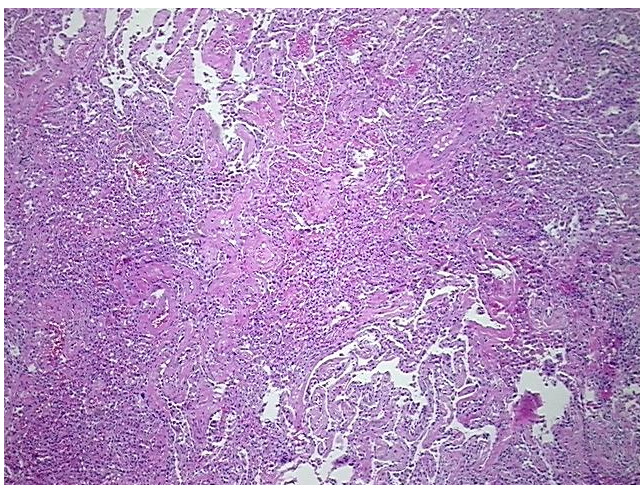
Product Type:	FFPE Sections
Disease State:	Other Disease
Diagnosis Category:	Pneumonia
Tissue:	Lung
Frozen Sample ID:	PA154783B0
Case ID:	CI0000015123
Tissue of Origin:	Lung
Site of Finding:	Lung
Appearance:	L
Sample Diagnosis (from Pathology Verification):	Pneumonia, post-obstructive
Normal:	0%
Lesional:	100%
Tumor:	0%
Tumor Hypo/Acellular Stroma:	0%
Tumor Hypercellular Stroma:	0%
Necrosis:	0%
Pathology Verification notes from H&E review:	Non Tumor Structures: 65% Alveoli, 10% Bronchioles, 25% Fibrovascular septa
CASE Diagnosis (from medical center path report):	Carcinoma of lung, large cell
Age:	77
Gender:	Male
Race:	White or Caucasian



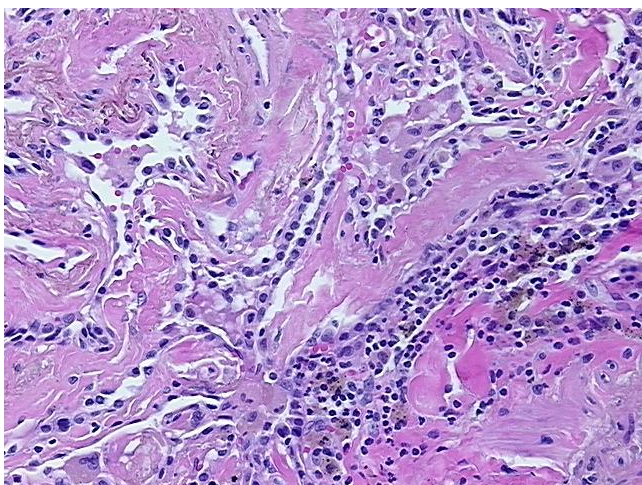
[View online »](#)

Tumor Grade:	AJCC G3: Poorly differentiated
Minimum Stage Grouping:	IB
T (Extent of Primary Tumor):	T2
N (Lymph node metastasis):	N0
M (Distant metastasis):	MX
Diagnostic Test Results:	PAS with diastase ~ Periodic acid-Schiff stain with diastase, Reported as Performed or Reviewed; ERBB1 ~ EGFR ~ Epidermal growth factor receptor ! by IHC, Positive, weak; HER2 ~ ERBB2 ~ Neu ! by IHC, Positive
Storage:	Store FFPE tissue sections at +4°C.
Stability:	All FFPE tissue sections are stable for 1 year from date of purchase.

### Product images:



4x Image



20x Image