

Product datasheet for CS711627

Tissue FFPE Sections, Lung

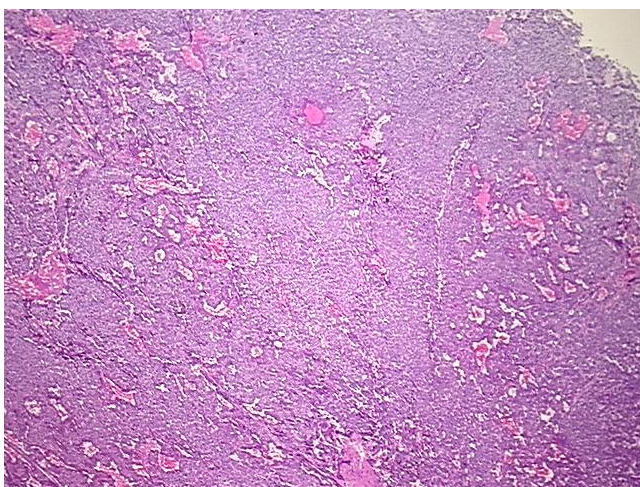
Product data:

| | |
|---|--|
| Product Type: | FFPE Sections |
| Disease State: | Cancer |
| Diagnosis Category: | Carcinoid/Neuroendocrine Tumors |
| Tissue: | Lung |
| Frozen Sample ID: | PA15477FD6 |
| Case ID: | CI0000015100 |
| Tissue of Origin: | Lung |
| Site of Finding: | Lung |
| Appearance: | T |
| Sample Diagnosis (from Pathology Verification): | Tumor of lung, carcinoid |
| Normal: | 0% |
| Lesional: | 0% |
| Tumor: | 90% |
| Tumor Hypo/Acellular Stroma: | 0% |
| Tumor Hypercellular Stroma: | 10% |
| Necrosis: | 0% |
| CASE Diagnosis (from medical center path report): | Adenocarcinoma of lung, bronchioloalveolar |
| Age: | 72 |
| Gender: | Female |
| Race: | Black or African American |
| Tumor Grade: | Not Reported |

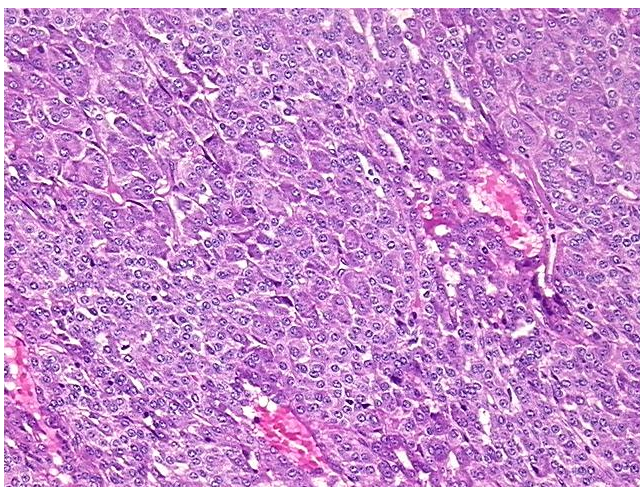


[View online »](#)

| | |
|------------------------------|---|
| Minimum Stage Grouping: | IA |
| T (Extent of Primary Tumor): | T1 |
| N (Lymph node metastasis): | N0 |
| M (Distant metastasis): | MX |
| Diagnostic Test Results: | S100 protein,Positive; Chromogranin A ~ Parathyroid secretory protein 1 ! by IHC,Positive |
| Storage: | Store FFPE tissue sections at +4°C. |
| Stability: | All FFPE tissue sections are stable for 1 year from date of purchase. |

Product images:

4x Image



20x Image