

## Product datasheet for CS711613

### Tissue FFPE Sections, Endometriotic tissue

#### Product data:

|                                                   |                                              |
|---------------------------------------------------|----------------------------------------------|
| Product Type:                                     | FFPE Sections                                |
| Disease State:                                    | Other Disease                                |
| Diagnosis Category:                               | Endometriosis                                |
| Tissue:                                           | Endometriotic tissue                         |
| Frozen Sample ID:                                 | PA00008DDF                                   |
| Case ID:                                          | CI0000015076                                 |
| Tissue of Origin:                                 | Endometriotic tissue                         |
| Site of Finding:                                  | Ovary: left                                  |
| Appearance:                                       | L                                            |
| Sample Diagnosis (from Pathology Verification):   | Endometriosis                                |
| Normal:                                           | 0%                                           |
| Lesional:                                         | 100%                                         |
| Tumor:                                            | 0%                                           |
| Tumor Hypo/Acellular Stroma:                      | 0%                                           |
| Tumor Hypercellular Stroma:                       | 0%                                           |
| Necrosis:                                         | 0%                                           |
| Pathology Verification notes from H&E review:     | No normal architecture in lesional component |
| CASE Diagnosis (from medical center path report): | Endometriosis                                |
| Age:                                              | 47                                           |
| Gender:                                           | Female                                       |
| Race:                                             | Black or African American                    |

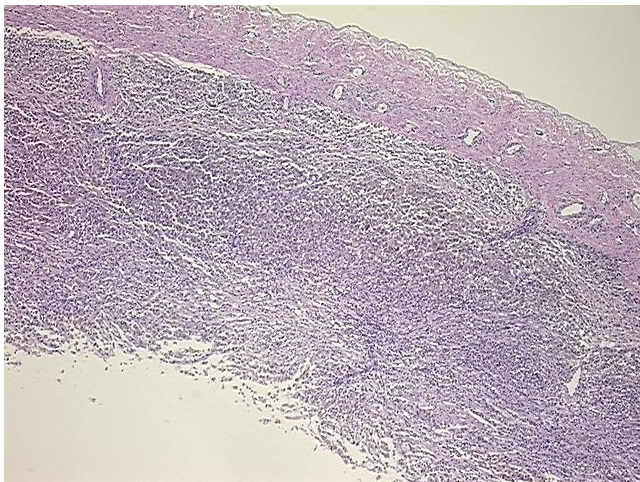


[View online »](#)

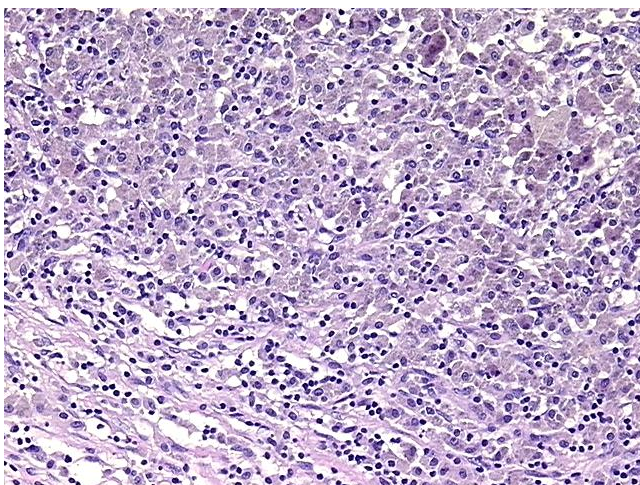
**Storage:** Store FFPE tissue sections at +4°C.

**Stability:** All FFPE tissue sections are stable for 1 year from date of purchase.

**Product images:**



4x Image



20x Image