

## Product datasheet for **CS711467**

### Tissue FFPE Sections, Lung

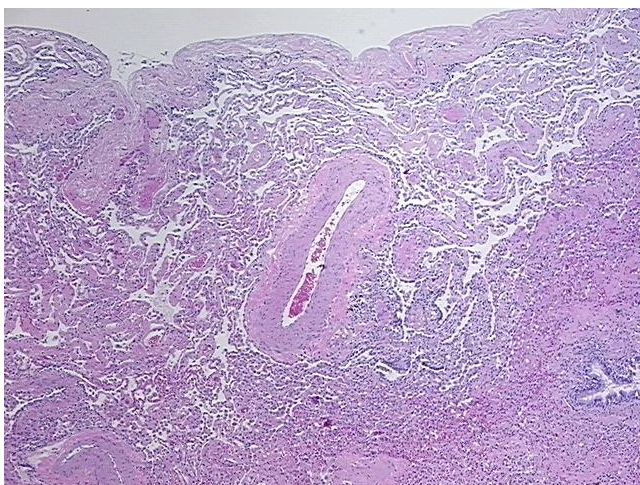
#### Product data:

Product Type:	FFPE Sections
Disease State:	Other Disease
Diagnosis Category:	Pneumonia
Tissue:	Lung
Frozen Sample ID:	PA1547831E
Case ID:	CI0000014961
Tissue of Origin:	Lung
Site of Finding:	Lung
Appearance:	L
Sample Diagnosis (from Pathology Verification):	Pneumonia, interstitial
Normal:	60%
Lesional:	40%
Tumor:	0%
Tumor Hypo/Acellular Stroma:	0%
Tumor Hypercellular Stroma:	0%
Necrosis:	0%
Pathology Verification notes from H&E review:	Non Tumor Structures: 70% Alveoli, 10% Bronchioles, 20% Fibrovascular septa
CASE Diagnosis (from medical center path report):	Adenocarcinoma of lung
Age:	64
Gender:	Male
Race:	White or Caucasian

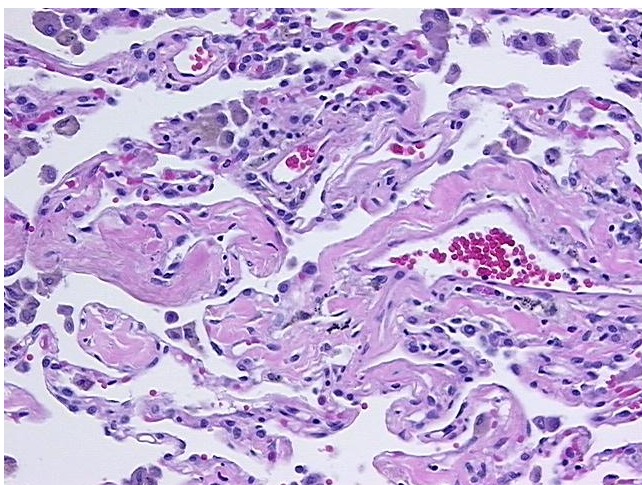


[View online »](#)

Tumor Grade:	AJCC G3: Poorly differentiated
Minimum Stage Grouping:	IB
T (Extent of Primary Tumor):	T2
N (Lymph node metastasis):	N0
M (Distant metastasis):	MX
Diagnostic Test Results:	ERBB1 ~ EGFR ~ Epidermal growth factor receptor ! by IHC,Positive, moderate; HER2 ~ ERBB2 ~ Neu ! by IHC,Negative
Storage:	Store FFPE tissue sections at +4°C.
Stability:	All FFPE tissue sections are stable for 1 year from date of purchase.

**Product images:**

4x Image



20x Image