

Product datasheet for **CS711435**

Tissue FFPE Sections, Pleura

Product data:

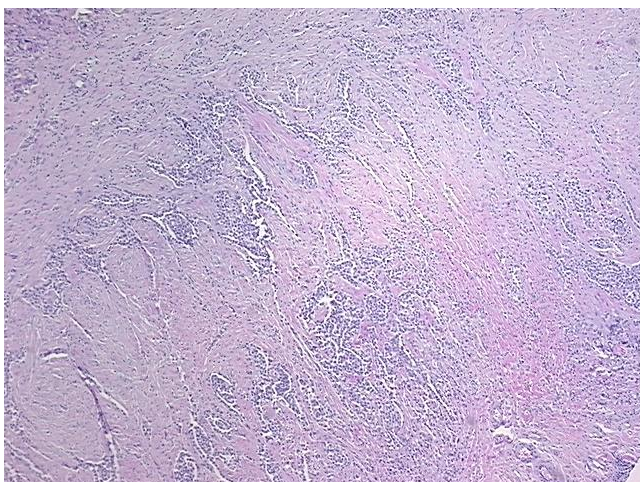
Product Type:	FFPE Sections
Disease State:	Cancer
Diagnosis Category:	Mesothelioma
Tissue:	Lung
Frozen Sample ID:	PA1547855B
Case ID:	CI0000014939
Tissue of Origin:	Pleura
Site of Finding:	Pleura
Appearance:	T
Sample Diagnosis (from Pathology Verification):	Mesothelioma of pleura
Normal:	0%
Lesional:	0%
Tumor:	20%
Tumor Hypo/Acellular Stroma:	0%
Tumor Hypercellular Stroma:	80%
Necrosis:	0%
Pathology Verification notes from H&E review:	Tumor: epithelial variant; Tumor Stroma (Cellular): Fibroblastic cells, Inflammatory cells
CASE Diagnosis (from medical center path report):	Mesothelioma of pleura
Age:	65
Gender:	Male
Race:	White or Caucasian



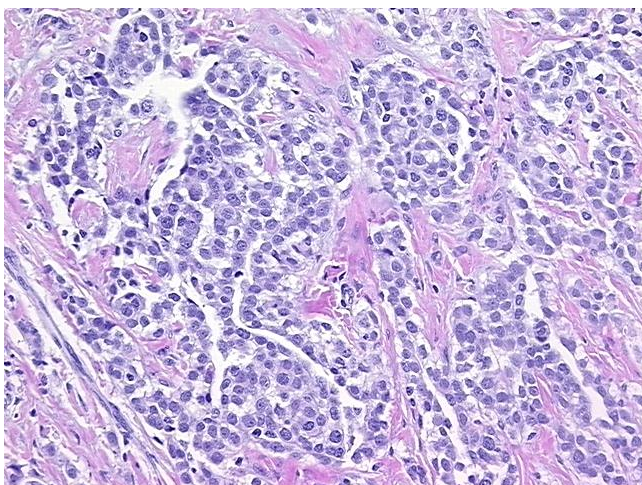
[View online »](#)

Tumor Grade:	Not Reported
Minimum Stage Grouping:	III
T (Extent of Primary Tumor):	T2
N (Lymph node metastasis):	N2
M (Distant metastasis):	MX
Diagnostic Test Results:	Cytokeratins (5 and 6) ~ CK5,6 ! by IHC,Positive; Epithelial specific antigen ~ BerEP4 ~ MOC31 ! by IHC,Negative; Cytokeratin CAM5.2 ~ CAM5.2 ! by IHC,Positive; CD66e ~ CEACAM5 ! by IHC,Negative; Cytokeratin AE1/AE3 ~ AE1/AE3 ! by IHC,Positive
Storage:	Store FFPE tissue sections at +4°C.
Stability:	All FFPE tissue sections are stable for 1 year from date of purchase.

Product images:



4x Image



20x Image