

Product datasheet for **CS711204**

Tissue FFPE Sections, Lymphoid tissue

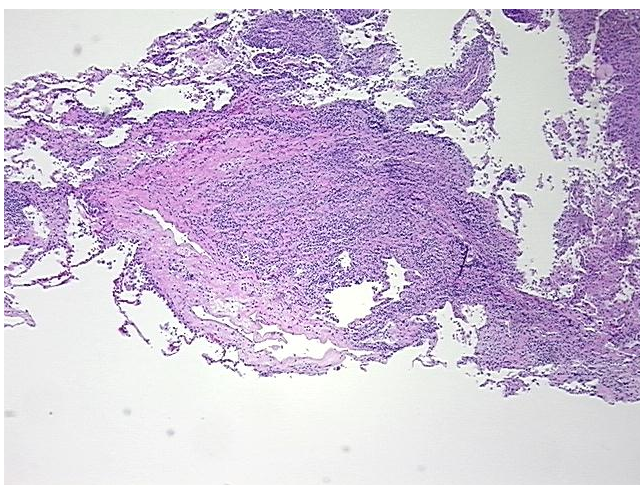
Product data:

Product Type:	FFPE Sections
Disease State:	Cancer
Diagnosis Category:	Lymphoma
Tissue:	Lymphoid tissue
Frozen Sample ID:	PA000099BB
Case ID:	CI0000014210
Tissue of Origin:	Lymphoid tissue
Site of Finding:	Lung
Appearance:	T
Sample Diagnosis (from Pathology Verification):	Lymphoma, large B-cell, diffuse
Normal:	0%
Lesional:	0%
Tumor:	10%
Tumor Hypo/Acellular Stroma:	0%
Tumor Hypercellular Stroma:	5%
Necrosis:	85%
CASE Diagnosis (from medical center path report):	Lymphoma, large B-cell, diffuse
Age:	44
Gender:	Male
Race:	White or Caucasian
Tumor Grade:	Not Reported

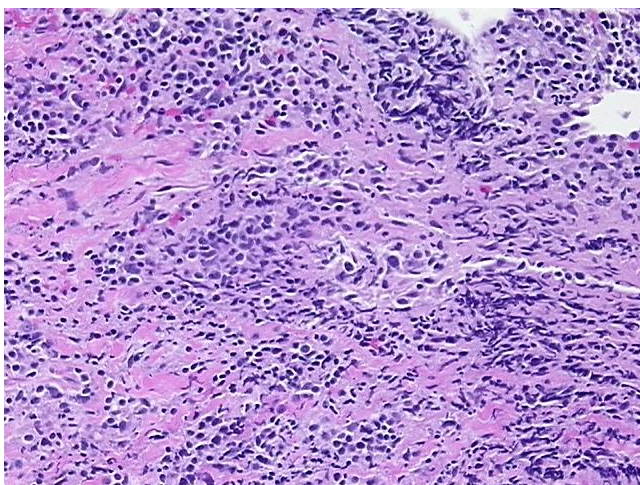


[View online »](#)

Minimum Stage Grouping:	IE
T (Extent of Primary Tumor):	Not applicable
N (Lymph node metastasis):	Not applicable
M (Distant metastasis):	Not applicable
Diagnostic Test Results:	CD45RO ~ A6 ~ UCHL1 ! by IHC,Negative; BCL2 oncoprotein ! by IHC,Positive; EBV latent membrane protein 1 ~ LMP1 ! by IHC,Positive; BCL6 oncoprotein ! by IHC,Negative; CD43 ~ Leu22 ! by IHC,Positive; CD10 ~ CALLA ~ Common ALL antigen ! by IHC,N
Storage:	Store FFPE tissue sections at +4°C.
Stability:	All FFPE tissue sections are stable for 1 year from date of purchase.

Product images:

4x Image



20x Image