

## Product datasheet for **CS711009**

### Tissue FFPE Sections, Muscle tissue

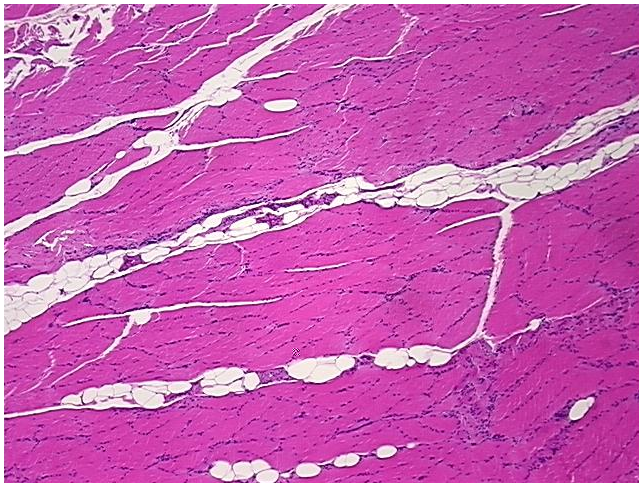
#### Product data:

Product Type:	FFPE Sections
Disease State:	Other Disease
Diagnosis Category:	Muscle Disease
Tissue:	Muscle tissue
Frozen Sample ID:	PA0F335C8C
Case ID:	CI0000013839
Tissue of Origin:	Muscle tissue
Site of Finding:	Muscle tissue
Appearance:	L
Sample Diagnosis (from Pathology Verification):	Myositis
Normal:	0%
Lesional:	100%
Tumor:	0%
Tumor Hypo/Acellular Stroma:	0%
Tumor Hypercellular Stroma:	0%
Necrosis:	0%
Pathology Verification notes from H&E review:	Inflammation: Mild Mixed inflammatory infiltrate; Non Tumor Structures: 90% Skeletal muscle, 10% Interstitial tissue
CASE Diagnosis (from medical center path report):	Sarcoma, pleomorphic
Age:	89
Gender:	Female
Race:	White or Caucasian

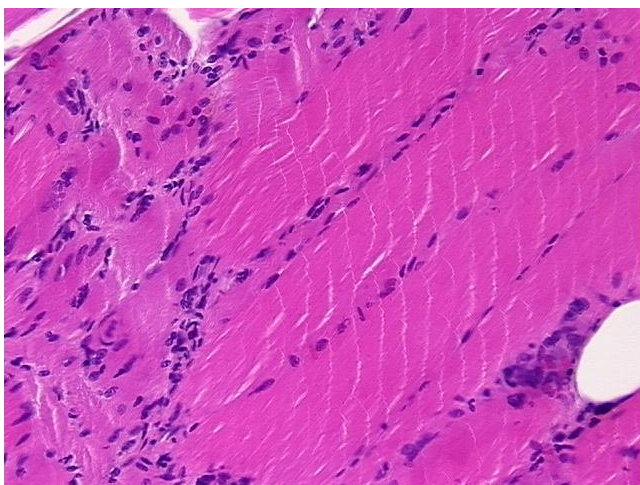


[View online »](#)

Tumor Grade:	AJCC G3: Poorly differentiated
Minimum Stage Grouping:	III
T (Extent of Primary Tumor):	T2b
N (Lymph node metastasis):	NX
M (Distant metastasis):	MX
Diagnostic Test Results:	Myogenin ~ Myf4 ! by IHC,Negative; Smooth muscle actin ~ SMA ~ Alpha-SMA ! by IHC,Positive, weak; S100 protein,Negative; Desmin ! by IHC,Negative; Cytokeratin CAM5.2 ~ CAM5.2 ! by IHC,Negative; CD31 ~ PECAM1 ! by IHC,Negative; CD34 ~ HPCA ! by
Storage:	Store FFPE tissue sections at +4°C.
Stability:	All FFPE tissue sections are stable for 1 year from date of purchase.

**Product images:**

4x Image



20x Image