

## Product datasheet for **CS710904**

### Tissue FFPE Sections, Cecum

#### Product data:

Product Type:	FFPE Sections
Disease State:	Normal
Diagnosis Category:	Normal
Tissue:	Colon
Frozen Sample ID:	PA15477BDB
Case ID:	CI0000013644
Tissue of Origin:	Cecum
Site of Finding:	Cecum
Appearance:	R
Sample Diagnosis (from Pathology Verification):	Within normal limits
Normal:	100%
Lesional:	0%
Tumor:	0%
Tumor Hypo/Acellular Stroma:	0%
Tumor Hypercellular Stroma:	0%
Necrosis:	0%
Pathology Verification notes from H&E review:	Non Tumor Structures: 25% Mucosa, 15% Submucosa, 60% Muscle
CASE Diagnosis (from medical center path report):	Crohns disease
Age:	45
Gender:	Female
Race:	White or Caucasian

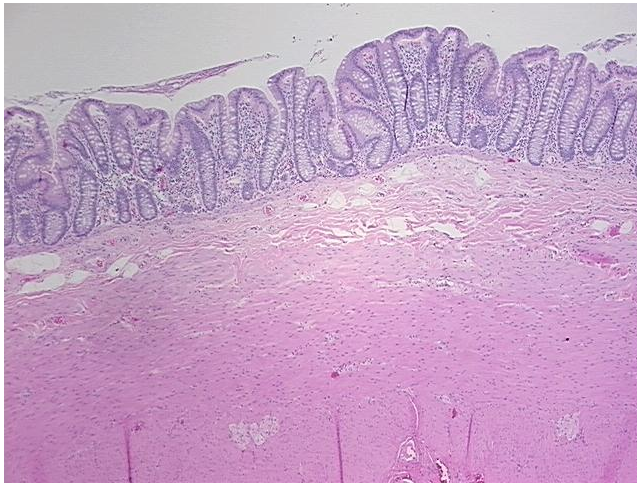


[View online »](#)

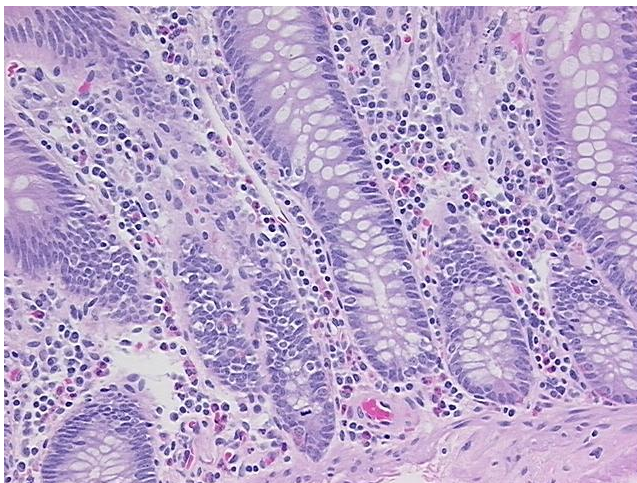
**Storage:** Store FFPE tissue sections at +4°C.

**Stability:** All FFPE tissue sections are stable for 1 year from date of purchase.

**Product images:**



4x Image



20x Image