

Product datasheet for CS710900

Tissue FFPE Sections, Ovary: left

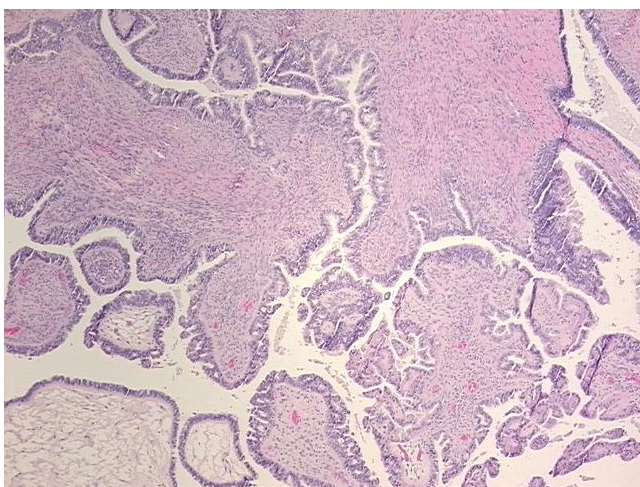
Product data:

Product Type:	FFPE Sections
Disease State:	Other Disease
Diagnosis Category:	Borderline Ovarian Tumor
Tissue:	Ovary
Frozen Sample ID:	PA00009508
Case ID:	CI0000013638
Tissue of Origin:	Ovary: left
Site of Finding:	Ovary: left
Appearance:	T
Sample Diagnosis (from Pathology Verification):	Tumor of ovary, papillary serous, borderline
Normal:	25%
Lesional:	0%
Tumor:	45%
Tumor Hypo/Acellular Stroma:	5%
Tumor Hypercellular Stroma:	25%
Necrosis:	0%
Pathology Verification notes from H&E review:	Tumor Stroma (Cellular): Desmoplastic reaction; Tumor Stroma (Hypo/Acellular): Fibrosis
CASE Diagnosis (from medical center path report):	Tumor of ovary, papillary serous, borderline
Age:	70
Gender:	Female
Race:	White or Caucasian

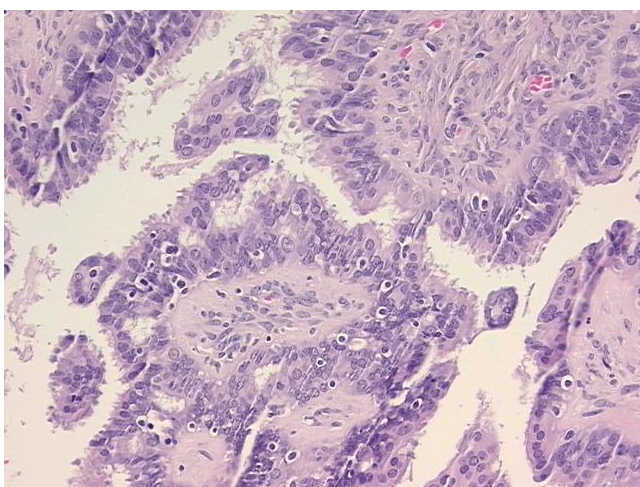


[View online »](#)

Tumor Grade:	AJCC GB: Borderline malignancy
Minimum Stage Grouping:	IIIB
T (Extent of Primary Tumor):	T3b
N (Lymph node metastasis):	N0
M (Distant metastasis):	MX
Storage:	Store FFPE tissue sections at +4°C.
Stability:	All FFPE tissue sections are stable for 1 year from date of purchase.

Product images:

4x Image



20x Image