

## Product datasheet for CS710665

### Tissue FFPE Sections, Brain

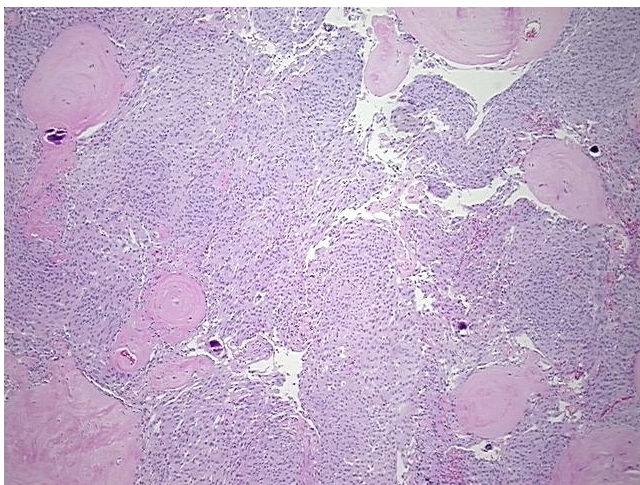
#### Product data:

Product Type:	FFPE Sections
Disease State:	Other Disease
Diagnosis Category:	Meningioma
Tissue:	Brain
Frozen Sample ID:	PA15477BEA
Case ID:	CI0000013492
Tissue of Origin:	Brain
Site of Finding:	Brain
Appearance:	T
Sample Diagnosis (from Pathology Verification):	Meningioma, meningothelial
Normal:	0%
Lesional:	0%
Tumor:	80%
Tumor Hypo/Acellular Stroma:	0%
Tumor Hypercellular Stroma:	20%
Necrosis:	0%
CASE Diagnosis (from medical center path report):	Meningioma, meningothelial
Age:	73
Gender:	Female
Race:	Not reported
Tumor Grade:	WHO Grade I

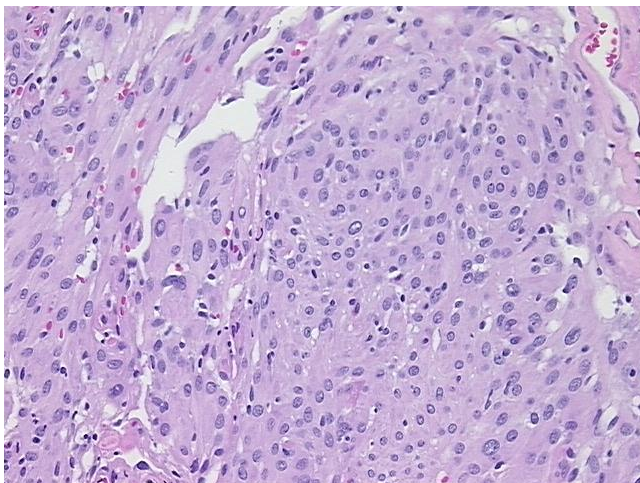


[View online »](#)

Minimum Stage Grouping:	Not Reported
T (Extent of Primary Tumor):	Not Reported
N (Lymph node metastasis):	Not Reported
M (Distant metastasis):	Not Reported
Storage:	Store FFPE tissue sections at +4°C.
Stability:	All FFPE tissue sections are stable for 1 year from date of purchase.

**Product images:**

4x Image



20x Image