

Product datasheet for **CS710546**

Tissue FFPE Sections, Kidney

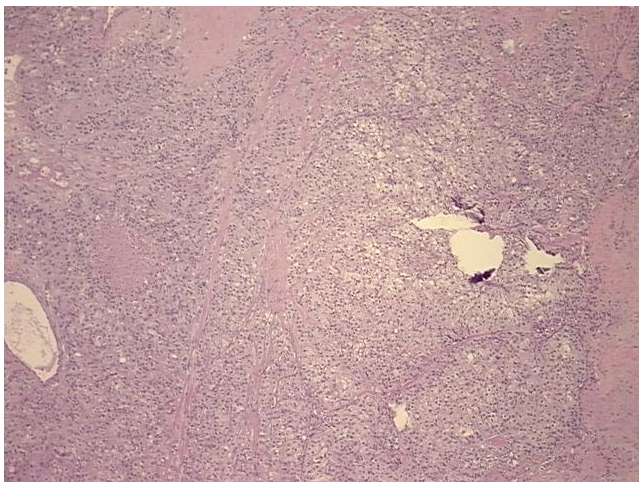
Product data:

| | |
|---|---|
| Product Type: | FFPE Sections |
| Disease State: | Cancer |
| Diagnosis Category: | Renal Cell Carcinoma |
| Tissue: | Kidney |
| Frozen Sample ID: | PA0F3359B1 |
| Case ID: | CI0000013406 |
| Tissue of Origin: | Kidney |
| Site of Finding: | Kidney |
| Appearance: | T |
| Sample Diagnosis (from Pathology Verification): | Carcinoma of kidney, renal cell, clear cell |
| Normal: | 0% |
| Lesional: | 0% |
| Tumor: | 30% |
| Tumor Hypo/Acellular Stroma: | 5% |
| Tumor Hypercellular Stroma: | 5% |
| Necrosis: | 60% |
| CASE Diagnosis (from medical center path report): | Carcinoma of kidney, renal cell, clear cell |
| Age: | 68 |
| Gender: | Male |
| Race: | White or Caucasian |
| Tumor Grade: | Fuhrman G3: Nuclei very irregular |

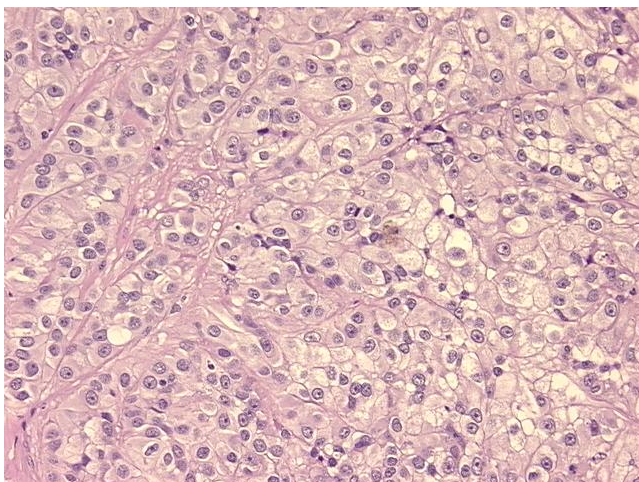


[View online »](#)

| | |
|------------------------------|--|
| Minimum Stage Grouping: | III |
| T (Extent of Primary Tumor): | T3b |
| N (Lymph node metastasis): | N0 |
| M (Distant metastasis): | MX |
| Diagnostic Test Results: | Cytokeratin CAM5.2 ~ CAM5.2 ! by IHC,Negative; Cytokeratin AE3 ~ AE3 ! by IHC,Negative; CD31 ~ PECAM1 ! by IHC,Positive; CD34 ~ HPCA ! by IHC,Positive |
| Storage: | Store FFPE tissue sections at +4°C. |
| Stability: | All FFPE tissue sections are stable for 1 year from date of purchase. |

Product images:

4x Image



20x Image