

Product datasheet for **CS710514**

Tissue FFPE Sections, Cervix

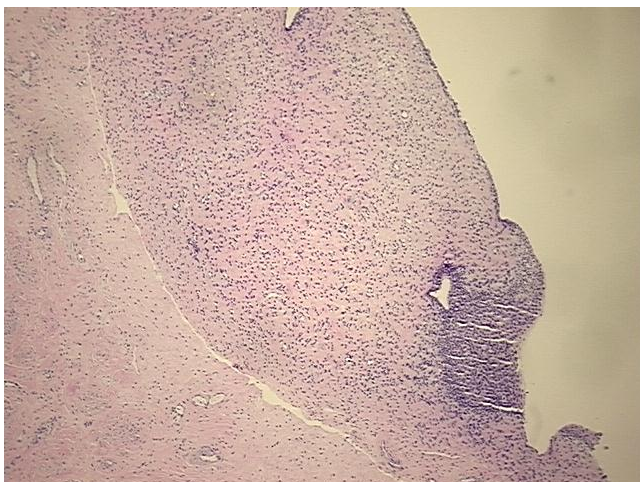
Product data:

| | |
|---|--|
| Product Type: | FFPE Sections |
| Disease State: | Other Disease |
| Diagnosis Category: | Inflammation (various) |
| Tissue: | Cervix |
| Frozen Sample ID: | PA10FD05EC |
| Case ID: | CI0000013340 |
| Tissue of Origin: | Cervix |
| Site of Finding: | Cervix |
| Appearance: | L |
| Sample Diagnosis (from Pathology Verification): | Cervicitis |
| Normal: | 0% |
| Lesional: | 100% |
| Tumor: | 0% |
| Tumor Hypo/Acellular Stroma: | 0% |
| Tumor Hypercellular Stroma: | 0% |
| Necrosis: | 0% |
| Pathology Verification notes from H&E review: | Inflammation: Moderate Mixed inflammatory infiltrate; Non Tumor Structures: 5% Squamous epithelium, 5% Glandular epithelium, 90% Fibromuscular stroma; Other Features/Comments: Transformation Zone absent |
| CASE Diagnosis (from medical center path report): | Adenocarcinoma of ovary, serous |
| Age: | 70 |
| Gender: | Female |

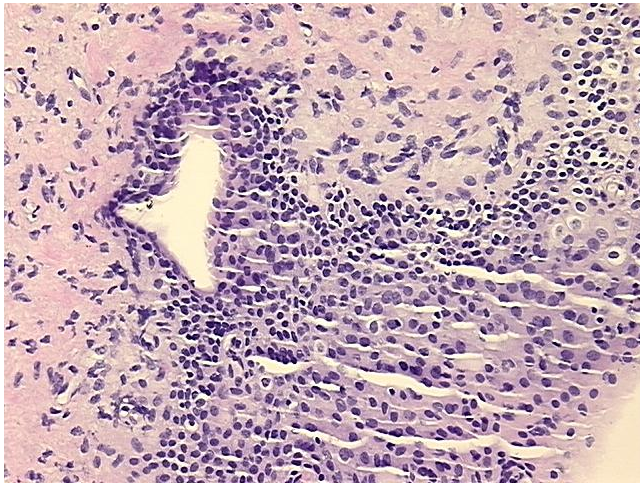


[View online »](#)

| | |
|------------------------------|---|
| Race: | White or Caucasian |
| Tumor Grade: | FIGO G2: Moderately differentiated |
| Minimum Stage Grouping: | IIIC |
| T (Extent of Primary Tumor): | T3c |
| N (Lymph node metastasis): | NX |
| M (Distant metastasis): | MX |
| Storage: | Store FFPE tissue sections at +4°C. |
| Stability: | All FFPE tissue sections are stable for 1 year from date of purchase. |

Product images:

4x Image



20x Image