

## Product datasheet for **CS710344**

### Tissue FFPE Sections, Colon

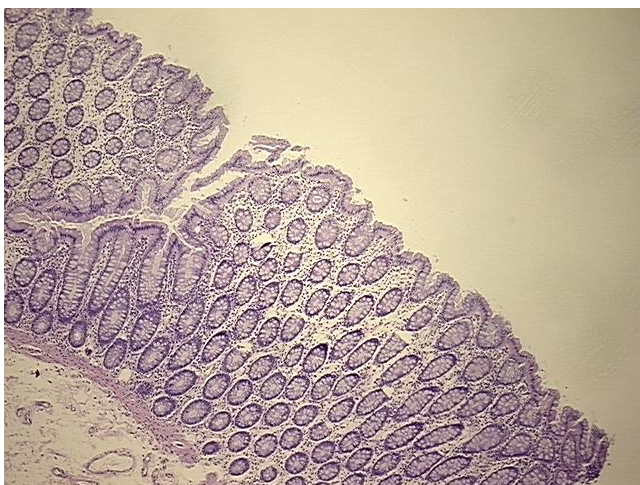
#### Product data:

Product Type:	FFPE Sections
Disease State:	Normal
Diagnosis Category:	Normal
Tissue:	Colon
Frozen Sample ID:	PA15478435
Case ID:	CI0000013229
Tissue of Origin:	Colon
Site of Finding:	Colon
Appearance:	R
Sample Diagnosis (from Pathology Verification):	Within normal limits
Normal:	100%
Lesional:	0%
Tumor:	0%
Tumor Hypo/Acellular Stroma:	0%
Tumor Hypercellular Stroma:	0%
Necrosis:	0%
Pathology Verification notes from H&E review:	Non Tumor Structures: 20% Mucosa, 20% Submucosa, 60% Muscle
CASE Diagnosis (from medical center path report):	Adenocarcinoma of ovary, serous
Age:	58
Gender:	Female
Race:	White or Caucasian

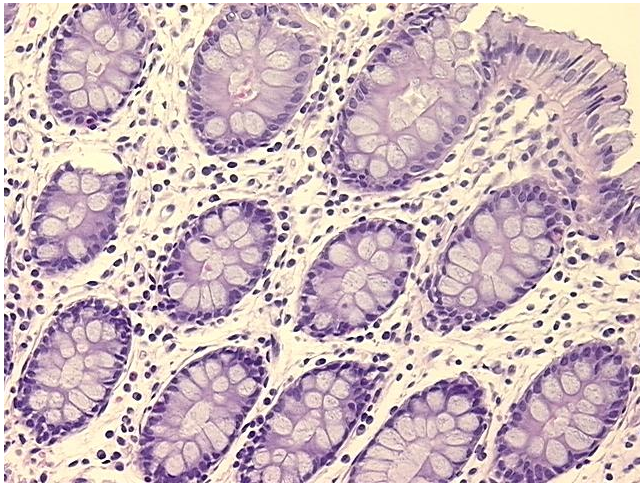


[View online »](#)

<b>Tumor Grade:</b>	FIGO G3: Poorly differentiated
<b>Minimum Stage Grouping:</b>	IIIC
<b>T (Extent of Primary Tumor):</b>	T3c
<b>N (Lymph node metastasis):</b>	N1
<b>M (Distant metastasis):</b>	MX
<b>Diagnostic Test Results:</b>	Synaptophysin ~ SYN ! by IHC,Negative; Cytokeratin 7 ~ CK7 ! by IHC,Positive; Cytokeratin 20 ~ CK20 ! by IHC,Negative; Chromogranin A ~ Parathyroid secretory protein 1 ! by IHC,Negative; Tumor associated glycoprotein-72 ~ TAG-72 ~ B72.3 antige
<b>Storage:</b>	Store FFPE tissue sections at +4°C.
<b>Stability:</b>	All FFPE tissue sections are stable for 1 year from date of purchase.

**Product images:**

4x Image



20x Image