

## Product datasheet for **CS709895**

### Tissue FFPE Sections, Endometriotic tissue

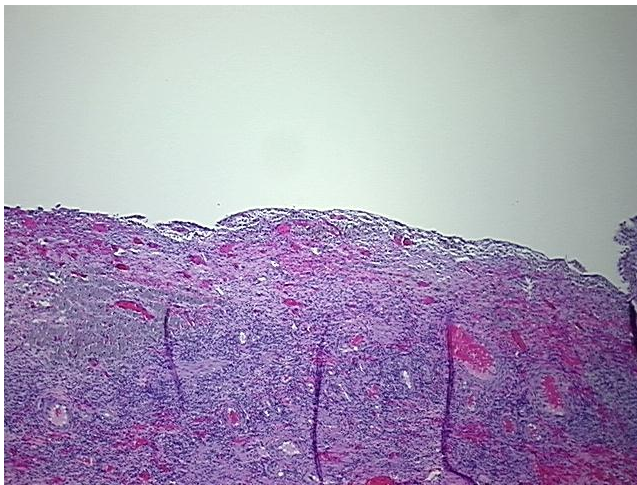
#### Product data:

Product Type:	FFPE Sections
Disease State:	Other Disease
Diagnosis Category:	Endometriosis
Tissue:	Endometriotic tissue
Frozen Sample ID:	PA154783D4
Case ID:	CI0000012721
Tissue of Origin:	Endometriotic tissue
Site of Finding:	Ovary: left
Appearance:	L
Sample Diagnosis (from Pathology Verification):	Endometriosis
Normal:	60%
Lesional:	40%
Tumor:	0%
Tumor Hypo/Acellular Stroma:	0%
Tumor Hypercellular Stroma:	0%
Necrosis:	0%
Pathology Verification notes from H&E review:	Non Tumor Structures: 60% Ovarian stroma, 40% Hilar vessels
CASE Diagnosis (from medical center path report):	Tumor of ovary, mucinous, borderline
Age:	45
Gender:	Female
Race:	White or Caucasian

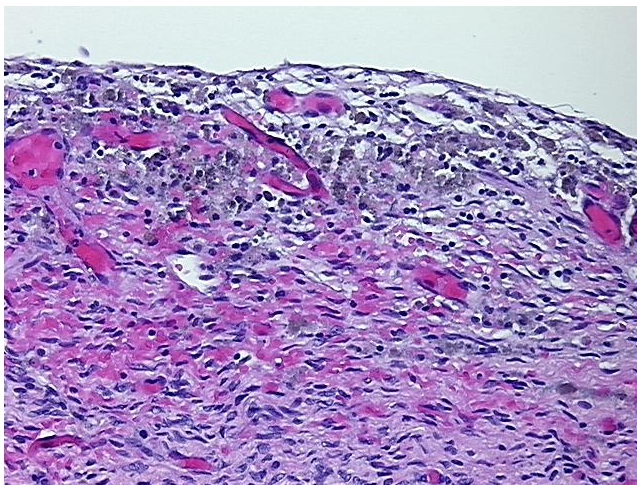


[View online »](#)

Tumor Grade:	AJCC GB: Borderline malignancy
Minimum Stage Grouping:	IA
T (Extent of Primary Tumor):	T1a
N (Lymph node metastasis):	NX
M (Distant metastasis):	M0
Storage:	Store FFPE tissue sections at +4°C.
Stability:	All FFPE tissue sections are stable for 1 year from date of purchase.

**Product images:**

4x Image



20x Image