

## Product datasheet for **CS709293**

### Tissue FFPE Sections, Lymphoid tissue

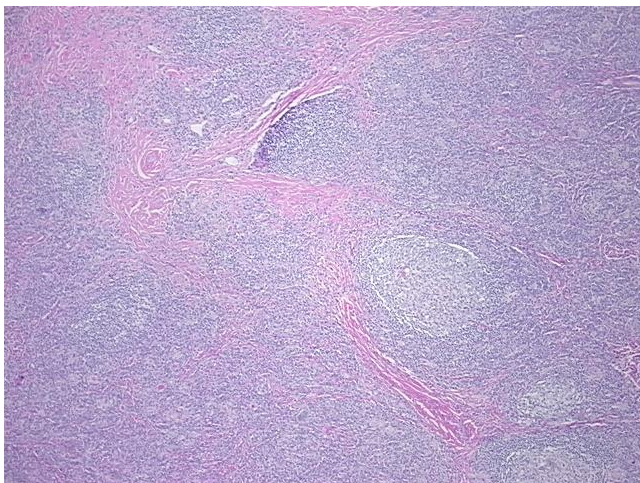
#### Product data:

Product Type:	FFPE Sections
Disease State:	Cancer
Diagnosis Category:	Lymphoma
Tissue:	Lymphoid tissue
Frozen Sample ID:	PA15477902
Case ID:	CI0000011601
Tissue of Origin:	Lymphoid tissue
Site of Finding:	Thyroid gland
Appearance:	T
Sample Diagnosis (from Pathology Verification):	Lymphoma, extranodal marginal zone B-cell
Normal:	10%
Lesional:	0%
Tumor:	80%
Tumor Hypo/Acellular Stroma:	10%
Tumor Hypercellular Stroma:	0%
Necrosis:	0%
Pathology Verification notes from H&E review:	Extra-nodal marginal zone lymphoma arising in the setting of intense auto-immune thyroiditis
CASE Diagnosis (from medical center path report):	Lymphoma, extranodal marginal zone B-cell
Age:	29
Gender:	Male
Race:	White or Caucasian

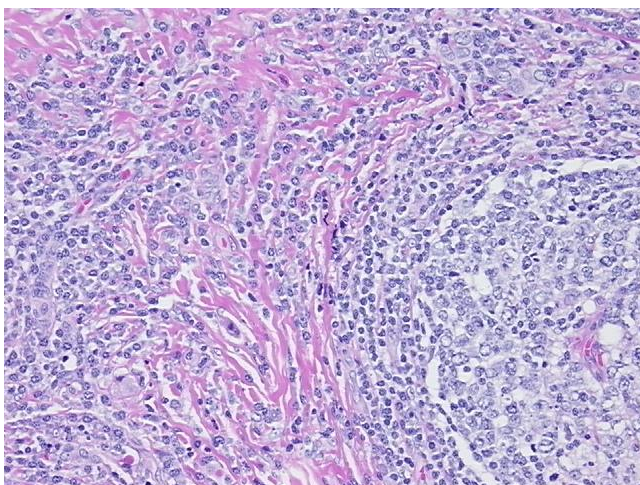


[View online »](#)

Tumor Grade:	Not Reported
Minimum Stage Grouping:	IE
T (Extent of Primary Tumor):	Not applicable
N (Lymph node metastasis):	Not applicable
M (Distant metastasis):	Not applicable
Diagnostic Test Results:	Cytokeratin (Pan) ~ Keratin, Pan ! by IHC,Positive; Kappa light chain ! by IHC,Positive, monoclonal; Lambda light chain ! by IHC,Positive in non-tumor cells; CD79a ~ Ig alpha ! by IHC,Positive; CD20 ~ B1 ~ Leu16 ! by IHC,Negative
Storage:	Store FFPE tissue sections at +4°C.
Stability:	All FFPE tissue sections are stable for 1 year from date of purchase.

**Product images:**

4x Image



20x Image