

Product datasheet for **CS709228**

Tissue FFPE Sections, Myometrium

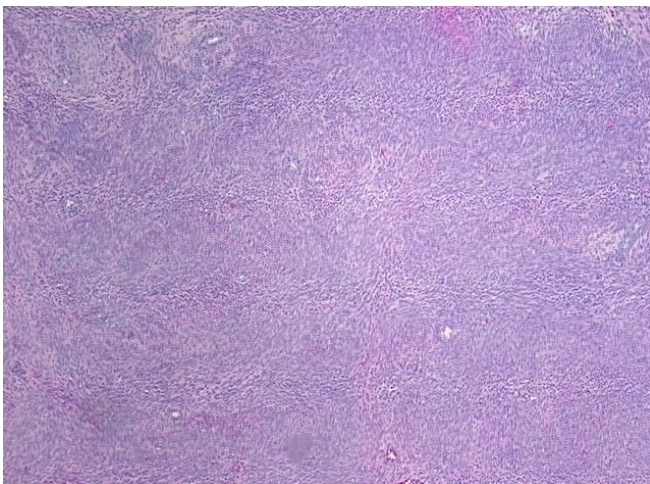
Product data:

Product Type:	FFPE Sections
Disease State:	Cancer
Diagnosis Category:	Sarcoma
Tissue:	Myometrium
Frozen Sample ID:	PA154776C6
Case ID:	CI0000011562
Tissue of Origin:	Myometrium
Site of Finding:	Uterus
Appearance:	T
Sample Diagnosis (from Pathology Verification):	Leiomyosarcoma
Normal:	0%
Lesional:	0%
Tumor:	98%
Tumor Hypo/Acellular Stroma:	0%
Tumor Hypercellular Stroma:	2%
Necrosis:	0%
CASE Diagnosis (from medical center path report):	Leiomyosarcoma
Age:	55
Gender:	Female
Race:	White or Caucasian
Tumor Grade:	FIGO G1: Well differentiated

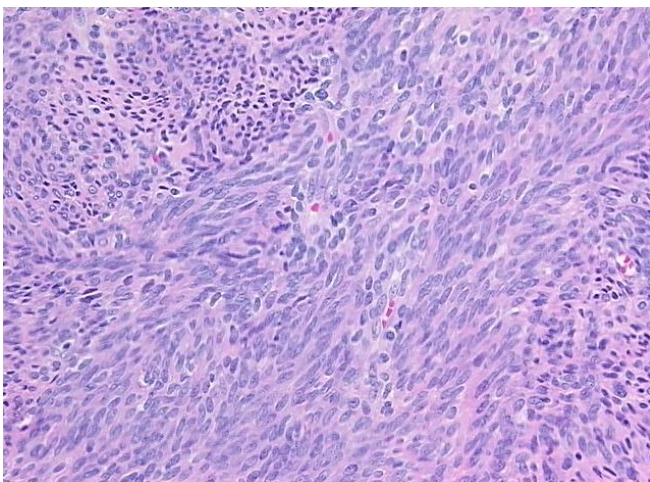


[View online »](#)

Minimum Stage Grouping:	IC
T (Extent of Primary Tumor):	T1c
N (Lymph node metastasis):	N0
M (Distant metastasis):	MX
Diagnostic Test Results:	Ki67 ~ MIB1 ! by IHC,High; Desmin ! by IHC,Positive, strong; MSA ~ Muscle Specific Actin,Positive, strong
Storage:	Store FFPE tissue sections at +4°C.
Stability:	All FFPE tissue sections are stable for 1 year from date of purchase.

Product images:

4x Image



20x Image