

Product datasheet for **CS709202**

Tissue FFPE Sections, Neural tissue

Product data:

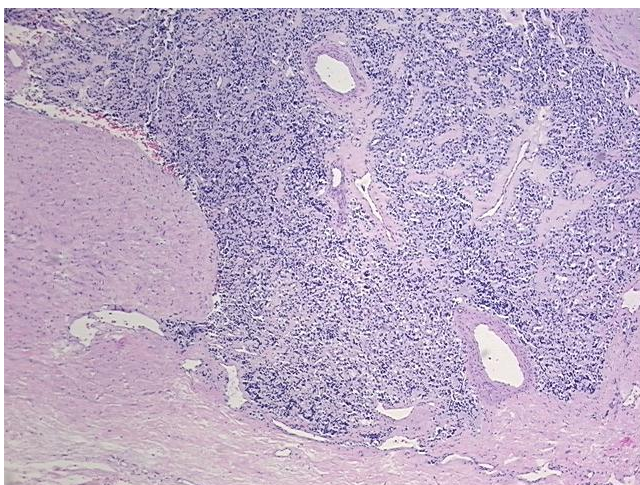
Product Type:	FFPE Sections
Disease State:	Cancer
Diagnosis Category:	Carcinoid/Neuroendocrine Tumors
Tissue:	Nerve
Frozen Sample ID:	PA15477D5A
Case ID:	CI0000011399
Tissue of Origin:	Neural tissue
Site of Finding:	Retroperitoneal region
Appearance:	T
Sample Diagnosis (from Pathology Verification):	Paranglioma of retroperitoneum
Normal:	75%
Lesional:	0%
Tumor:	20%
Tumor Hypo/Acellular Stroma:	0%
Tumor Hypercellular Stroma:	5%
Necrosis:	0%
Pathology Verification notes from H&E review:	Non Tumor Structures: 100% mesentery
CASE Diagnosis (from medical center path report):	Paranglioma of retroperitoneum
Age:	31
Gender:	Female
Race:	White or Caucasian



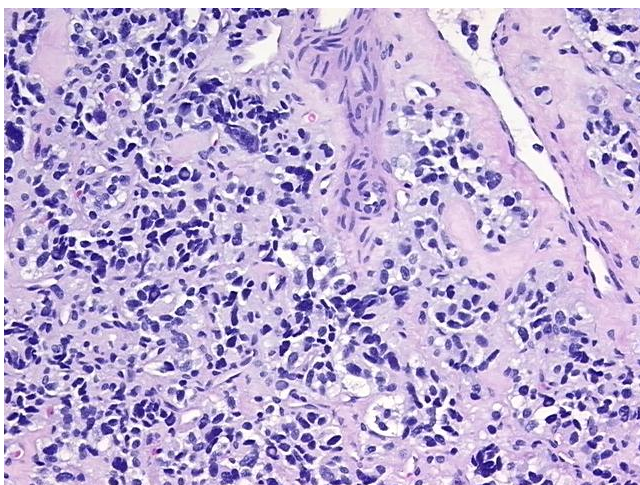
[View online »](#)

Tumor Grade:	Not Reported
Minimum Stage Grouping:	Not Reported
T (Extent of Primary Tumor):	Not Reported
N (Lymph node metastasis):	Not Reported
M (Distant metastasis):	Not Reported
Diagnostic Test Results:	Caldesmon (h),Negative; Neuron specific enolase ~ NSE ! by IHC,Positive; Smooth muscle actin ~ SMA ~ Alpha-SMA ! by IHC,Negative; S100 protein,Positive; Synaptophysin ~ SYN ! by IHC,Positive; Desmin ! by IHC,Negative; Cytokeratin CAM5.2 ~ CAM5.2
Storage:	Store FFPE tissue sections at +4°C.
Stability:	All FFPE tissue sections are stable for 1 year from date of purchase.

Product images:



4x Image



20x Image