

Product datasheet for **CS709174**

Tissue FFPE Sections, Gastroesophageal junction

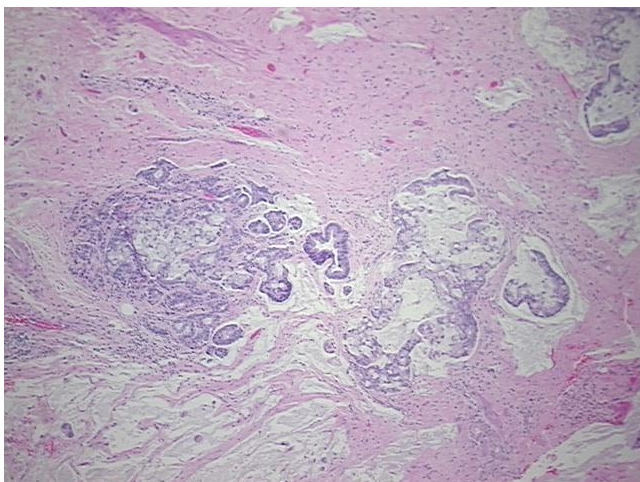
Product data:

Product Type:	FFPE Sections
Disease State:	Cancer
Diagnosis Category:	Esophageal/Gastroesophageal Cancer
Tissue:	Gastroesophageal junction
Frozen Sample ID:	PA15477973
Case ID:	CI0000011358
Tissue of Origin:	Gastroesophageal junction
Site of Finding:	Stomach
Appearance:	T
Sample Diagnosis (from Pathology Verification):	Adenocarcinoma of gastroesophageal junction
Normal:	30%
Lesional:	0%
Tumor:	30%
Tumor Hypo/Acellular Stroma:	20%
Tumor Hypercellular Stroma:	20%
Necrosis:	0%
Pathology Verification notes from H&E review:	Tumor: Poorly differentiated adenocarcinoma with signet ring differentiation arising at the gastroesophageal junction, involving the stomach by direct extension; Tumor Stroma (Hypo/Acellular): Mucin
CASE Diagnosis (from medical center path report):	Adenocarcinoma of gastroesophageal junction
Age:	52
Gender:	Male

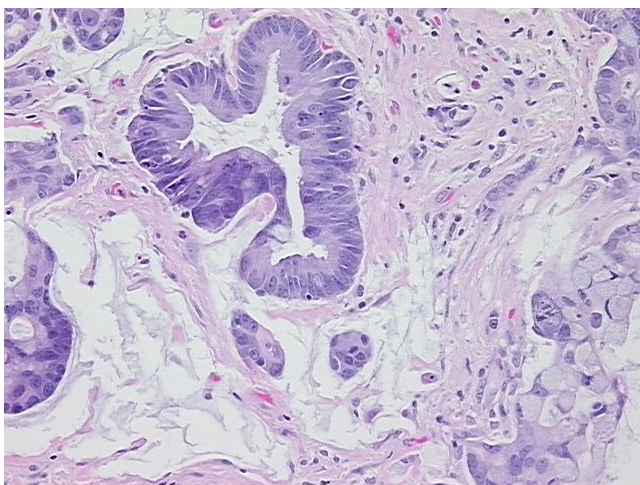


[View online »](#)

Race:	White or Caucasian
Tumor Grade:	AJCC G3: Poorly differentiated
Minimum Stage Grouping:	IIIA
T (Extent of Primary Tumor):	T2b
N (Lymph node metastasis):	N2
M (Distant metastasis):	MX
Storage:	Store FFPE tissue sections at +4°C.
Stability:	All FFPE tissue sections are stable for 1 year from date of purchase.

Product images:

4x Image



20x Image