

## Product datasheet for **CS709159**

### Tissue FFPE Sections, Ovary

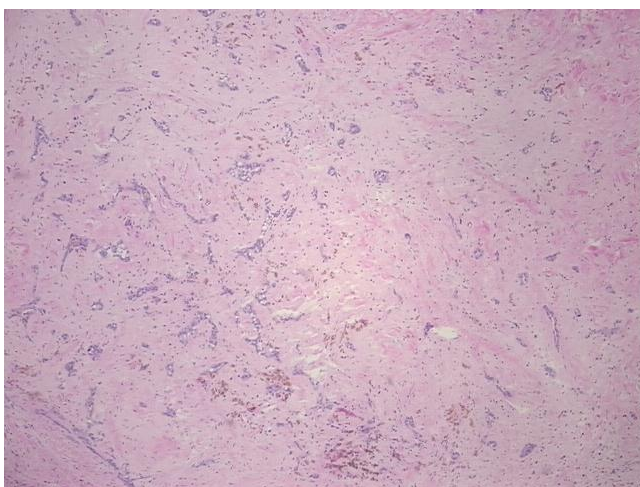
#### Product data:

|   |   |
|---|---|
| Product Type:                                     | FFPE Sections                                       |
| Disease State:                                    | Cancer  |
| Diagnosis Category:                               | Ovarian Cancer                                      |
| Tissue:   | Ovary   |
| Frozen Sample ID:                                 | PA1547797C  |
| Case ID:  | CI0000011328  |
| Tissue of Origin:                                 | Ovary   |
| Site of Finding:                                  | Ovary   |
| Appearance:                                       | T   |
| Sample Diagnosis (from Pathology Verification):   | Adenocarcinoma of ovary, papillary serous           |
| Normal:   | 0%  |
| Lesional:   | 0%  |
| Tumor:  | 15%   |
| Tumor Hypo/Acellular Stroma:                      | 25%   |
| Tumor Hypercellular Stroma:                       | 0%  |
| Necrosis:   | 60%   |
| Pathology Verification notes from H&E review:     | Tumor Stroma (Hypo/Acellular): Fibrosis, hemorrhage |
| CASE Diagnosis (from medical center path report): | Adenocarcinoma of ovary, papillary serous           |
| Age:  | 65  |
| Gender:   | Female  |
| Race:   | White or Caucasian                                  |

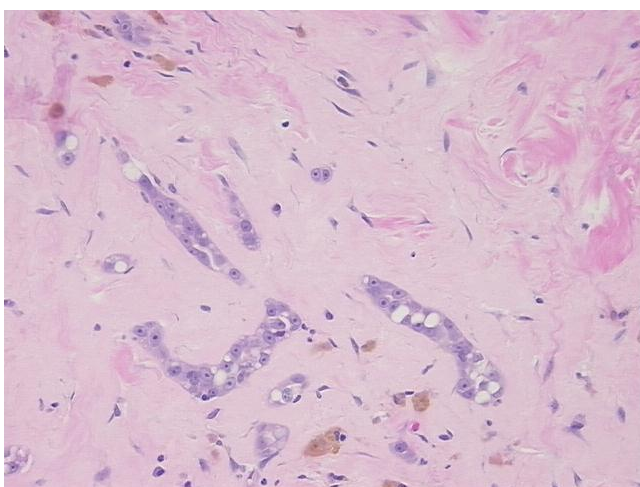


[View online »](#)

|                              |   |
|------------------------------|---|
| Tumor Grade:                 | FIGO G3: Poorly differentiated  |
| Minimum Stage Grouping:      | IIIC  |
| T (Extent of Primary Tumor): | T3c   |
| N (Lymph node metastasis):   | N1  |
| M (Distant metastasis):      | MX  |
| Storage:                     | Store FFPE tissue sections at +4°C.                                   |
| Stability:                   | All FFPE tissue sections are stable for 1 year from date of purchase. |

**Product images:**

4x Image



20x Image