

Product datasheet for **CS708973**

Tissue FFPE Sections, Colon: sigmoid

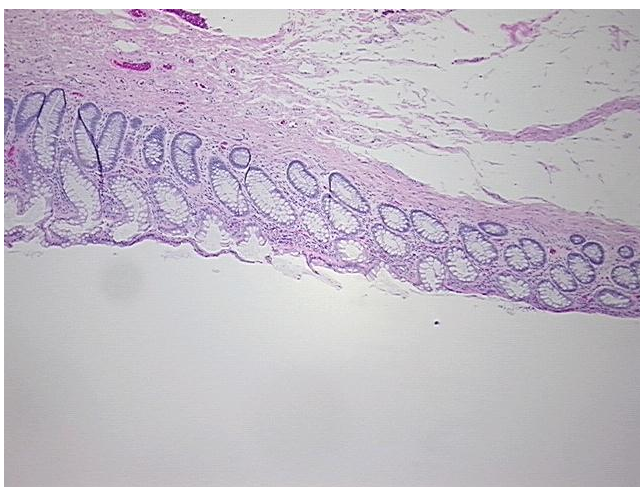
Product data:

Product Type:	FFPE Sections
Disease State:	Normal
Diagnosis Category:	Normal
Tissue:	Colon
Frozen Sample ID:	PA0000818C
Case ID:	CI0000010884
Tissue of Origin:	Colon: sigmoid
Site of Finding:	Colon: sigmoid
Appearance:	R
Sample Diagnosis (from Pathology Verification):	Within normal limits
Normal:	100%
Lesional:	0%
Tumor:	0%
Tumor Hypo/Acellular Stroma:	0%
Tumor Hypercellular Stroma:	0%
Necrosis:	0%
Pathology Verification notes from H&E review:	5% mucosa, 15% submucosa, 80% muscle
CASE Diagnosis (from medical center path report):	Adenocarcinoma of colon
Age:	56
Gender:	Female
Race:	White or Caucasian



[View online »](#)

Tumor Grade:	AJCC G2: Moderately differentiated
Minimum Stage Grouping:	IIIB
T (Extent of Primary Tumor):	T4
N (Lymph node metastasis):	N1
M (Distant metastasis):	MX
Storage:	Store FFPE tissue sections at +4°C.
Stability:	All FFPE tissue sections are stable for 1 year from date of purchase.

Product images:

4x Image



20x Image