

## Product datasheet for **CS708953**

### Tissue FFPE Sections, Ovary: left

#### Product data:

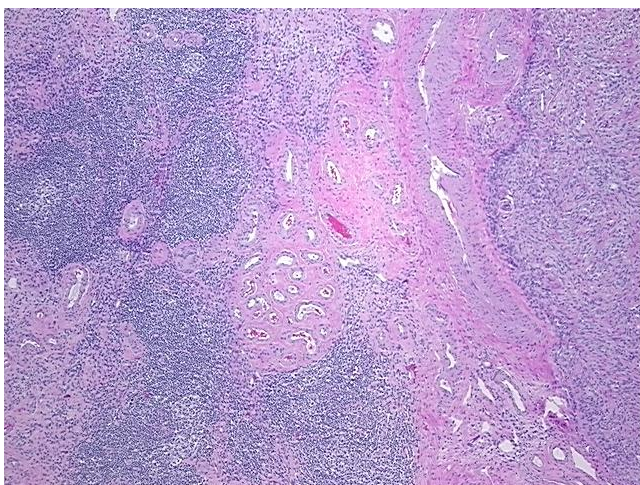
Product Type:	FFPE Sections
Disease State:	Cancer
Diagnosis Category:	Lymphoma
Tissue:	Lymphoid tissue
Frozen Sample ID:	PA000087DC
Case ID:	CI0000010866
Tissue of Origin:	Ovary: left
Site of Finding:	Ovary: left
Appearance:	T
Sample Diagnosis (from Pathology Verification):	Lymphoma, follicular
Normal:	65%
Lesional:	5%
Tumor:	30%
Tumor Hypo/Acellular Stroma:	0%
Tumor Hypercellular Stroma:	0%
Necrosis:	0%
Pathology Verification notes from H&E review:	Lesion (5%): Incidental leiomyoma 100%; Non Tumor Structures: 30% Ovarian stroma, 70% Hilar vessels
CASE Diagnosis (from medical center path report):	Adenocarcinoma of endometrium
Age:	68
Gender:	Female
Race:	White or Caucasian



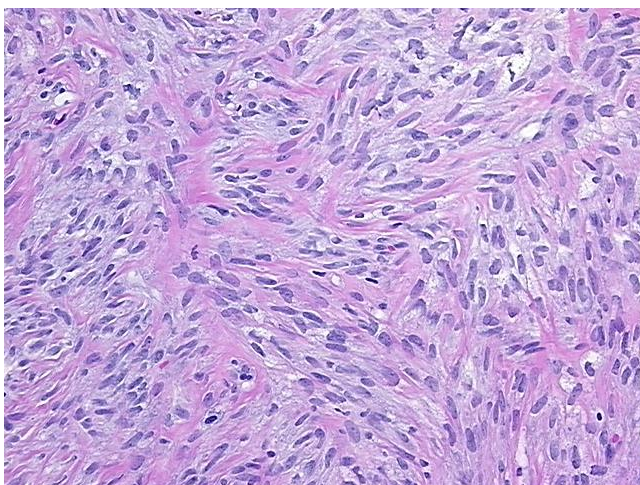
[View online »](#)

Tumor Grade:	FIGO G3: Poorly differentiated
Minimum Stage Grouping:	IA
T (Extent of Primary Tumor):	T1a
N (Lymph node metastasis):	NX
M (Distant metastasis):	MX
Diagnostic Test Results:	CD3 ~ Leu4 ~ UCHT1 ! by IHC,Positive in scattered cells; BCL2 oncoprotein ! by IHC,Positive; BCL6 oncoprotein ! by IHC,Positive; CD10 ~ CALLA ~ Common ALL antigen ! by IHC,Positive; CD20 ~ B1 ~ Leu16 ! by IHC,Positive
Storage:	Store FFPE tissue sections at +4°C.
Stability:	All FFPE tissue sections are stable for 1 year from date of purchase.

### Product images:



4x Image



20x Image