

Product datasheet for **CS708864**

Tissue FFPE Sections, Ovary

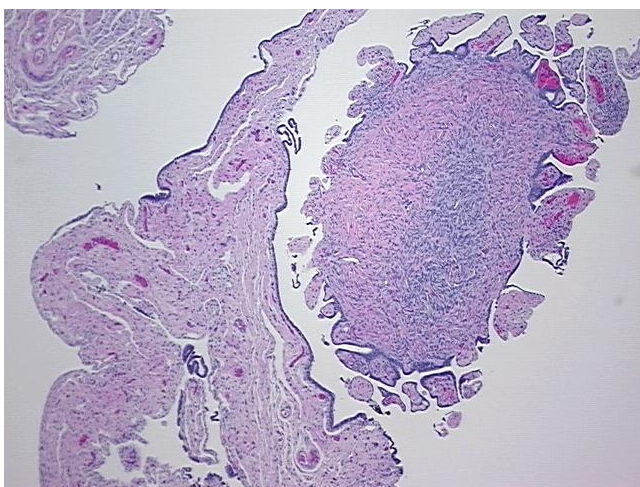
Product data:

Product Type:	FFPE Sections
Disease State:	Other Disease
Diagnosis Category:	Benign Tumors
Tissue:	Ovary
Frozen Sample ID:	PA000080CB
Case ID:	CI0000010799
Tissue of Origin:	Ovary
Site of Finding:	Ovary
Appearance:	T
Sample Diagnosis (from Pathology Verification):	Cystadenoma of ovary, serous
Normal:	0%
Lesional:	0%
Tumor:	100%
Tumor Hypo/Acellular Stroma:	0%
Tumor Hypercellular Stroma:	0%
Necrosis:	0%
Pathology Verification notes from H&E review:	Tumor:10% epithelium, 90% stroma
CASE Diagnosis (from medical center path report):	Adenocarcinoma of endometrium, endometrioid
Age:	69
Gender:	Female
Race:	White or Caucasian

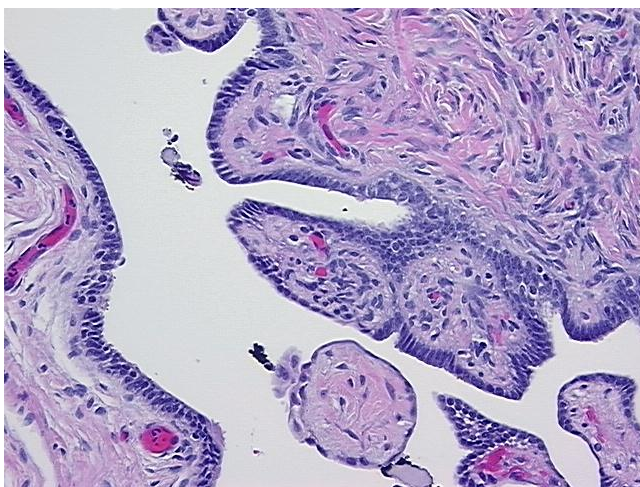


[View online »](#)

Tumor Grade:	FIGO G2: Moderately differentiated
Minimum Stage Grouping:	IB
T (Extent of Primary Tumor):	T1b
N (Lymph node metastasis):	NX
M (Distant metastasis):	MX
Storage:	Store FFPE tissue sections at +4°C.
Stability:	All FFPE tissue sections are stable for 1 year from date of purchase.

Product images:

4x Image



20x Image