

## Product datasheet for **CS708822**

### Tissue FFPE Sections, Meniscus

#### Product data:

|   |                      |
|---|----------------------|
| Product Type:                                     | FFPE Sections        |
| Disease State:                                    | Normal               |
| Diagnosis Category:                               | Normal               |
| Tissue:   | Meniscus             |
| Frozen Sample ID:                                 | PA00007B19           |
| Case ID:  | CI0000010739         |
| Tissue of Origin:                                 | Meniscus             |
| Site of Finding:                                  | Meniscus             |
| Appearance:                                       | R                    |
| Sample Diagnosis (from Pathology Verification):   | Within normal limits |
| Normal:   | 100%                 |
| Lesional:   | 0%                   |
| Tumor:  | 0%                   |
| Tumor Hypo/Acellular Stroma:                      | 0%                   |
| Tumor Hypercellular Stroma:                       | 0%                   |
| Necrosis:   | 0%                   |
| Pathology Verification notes from H&E review:     | 100% fibrocartilage  |
| CASE Diagnosis (from medical center path report): | Osteoarthritis       |
| Age:  | 55                   |
| Gender:   | Female               |
| Race:   | Not reported         |

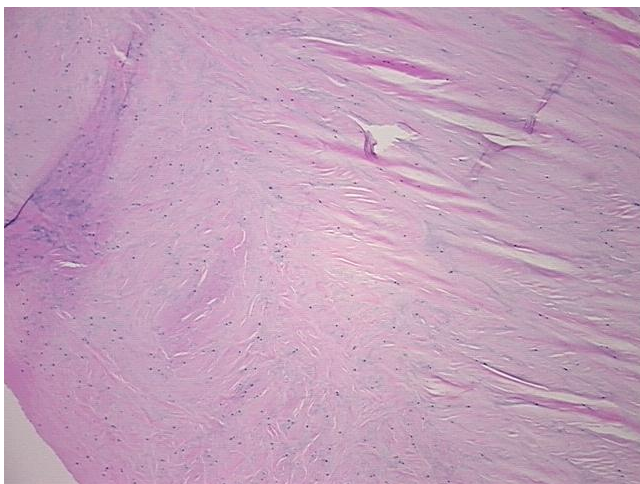


[View online »](#)

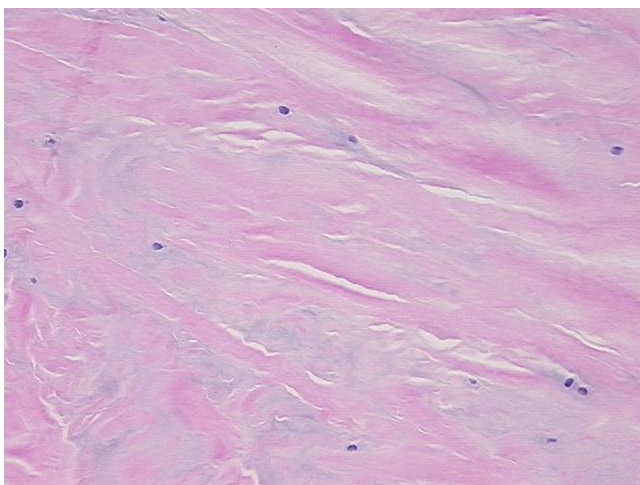
**Storage:** Store FFPE tissue sections at +4°C.

**Stability:** All FFPE tissue sections are stable for 1 year from date of purchase.

**Product images:**



4x Image



20x Image