

Product datasheet for **CS708454**

Tissue FFPE Sections, Colon

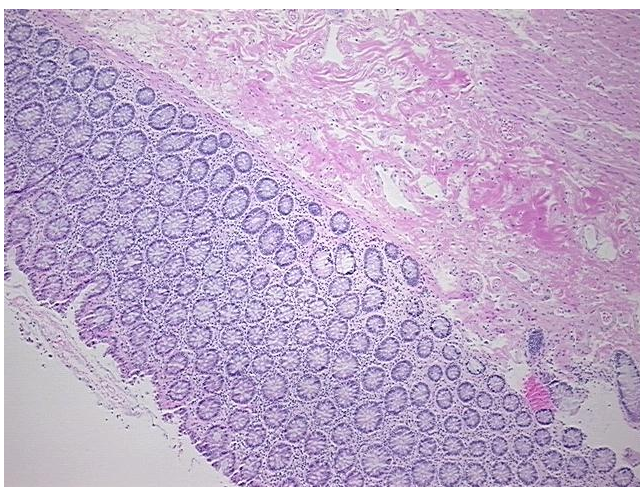
Product data:

| | |
|---|---------------------------------------|
| Product Type: | FFPE Sections |
| Disease State: | Normal |
| Diagnosis Category: | Normal |
| Tissue: | Colon |
| Frozen Sample ID: | PA154778BC |
| Case ID: | CI0000010210 |
| Tissue of Origin: | Colon |
| Site of Finding: | Colon |
| Appearance: | R |
| Sample Diagnosis (from Pathology Verification): | Within normal limits |
| Normal: | 100% |
| Lesional: | 0% |
| Tumor: | 0% |
| Tumor Hypo/Acellular Stroma: | 0% |
| Tumor Hypercellular Stroma: | 0% |
| Necrosis: | 0% |
| Pathology Verification notes from H&E review: | 10% mucosa, 20% submucosa, 70% muscle |
| CASE Diagnosis (from medical center path report): | Adenocarcinoma of colon |
| Age: | 83 |
| Gender: | Female |
| Race: | White or Caucasian |

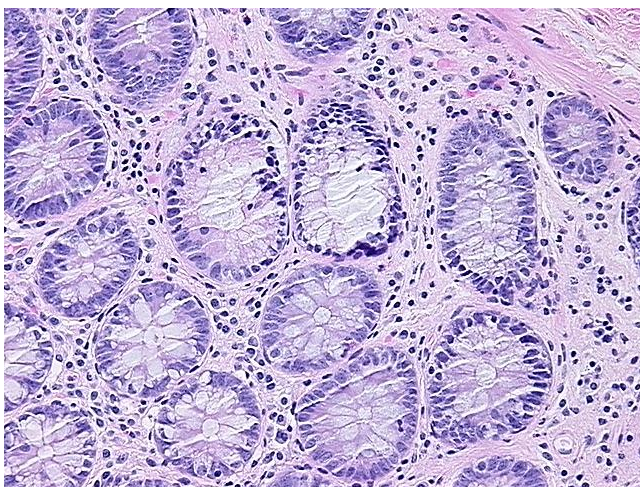


[View online »](#)

| | |
|------------------------------|---|
| Tumor Grade: | AJCC G1: Well differentiated |
| Minimum Stage Grouping: | IIA |
| T (Extent of Primary Tumor): | T3 |
| N (Lymph node metastasis): | N0 |
| M (Distant metastasis): | MX |
| Storage: | Store FFPE tissue sections at +4°C. |
| Stability: | All FFPE tissue sections are stable for 1 year from date of purchase. |

Product images:

4x Image



20x Image